

GSD INDUSTRIAL CO., LTD.

*DH(V)*

单级双吸式离心泵



川源股份有限公司

## 简介

DH(V)系列单级双吸离心泵，与其它类型的泵相比寿命长、效率高、结构合理、运行成本低、安装及维修方便。

## 用途

DH(V)型泵适用于输送不含固体颗粒及温度不超过130°C的清洁液体。

1. 暖通空调冷却水循环
2. 工厂、矿山、城市给排水
3. 电站、水利工程及农田灌溉
4. 消防系统，船舶工业，石化行业

## GENERAL DESCRIPTION

DH(V) series split case pump is of single stage, double suction centrifugal pump. Compared with other type of pumps, it features long service life, high efficiency, advanced construction, low operation cost, friendly maintenance and service.

## APPLICATION

Type DH(V) pump can be used to delivery clear liquids and should not contain solid grain at temperature below 130°C.

1. Air-condition cold water circulation.
2. Water supply and discharge in factories, mines, urban areas.
3. Water supply in power plants, water-conservancy projects as well as irrigation and drainage of farmland
4. Fire system, ship industry and chemical & oil industry.

## 型号说明 TYPE DESCRIPTION

DH(V) - 150 - 259 - 71 - O

"O"表示原型，即叶轮外径未经过切割，没有标注"O"表示原型叶轮经过切割  
"O" means impeller not been trimmed, not marked means the original impeller has been trimmed

额定扬程  
Rated head (m)

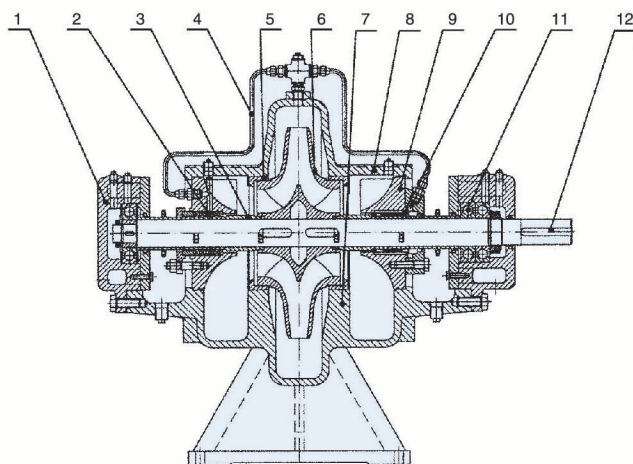
额定流量  
Rated capacity (m<sup>3</sup>/h)

进口直径  
Suction dia (mm)

DH单级双吸卧式离心泵  
Single-stage, double-suction horizontal centrifugal pump

DV单级双吸立式离心泵  
Single-stage, double-suction vertical centrifugal pump

## 结构简图及材质 CONSTRUCTION AND MATERIAL



No.	名称 NAME	材质 MATERIAL
1	轴承体 BEARING UNIT	HT250/QT400-181/ZG230-450
2	填料密封 PACKING SEAL	-
3	密封轴套 SHAFT SLEEVE	45
4	密封冲洗管 FLUSH LINE	Q235
5	密封环 SEAL RING	HT250/ZCuSn5P65Zn5/ZG1Cr18Ni12Mo2Ti
6	叶轮 IMPELLER	HT250/ZCuSn10Zn2/ZCuZn16Si4/ZG1Cr18Ni12Mo2Ti
7	泵体 PUMP CASING	HT250/QT400-18/ZG230-450
8	泵盖 PUMP COVER	HT250/QT400-18/ZG230-450
9	密封体 SEALING UNIT	HT250/QT400-18/ZG230-450
10	机械密封 MECHANICAL SEAL	C/Al <sub>2</sub> O <sub>3</sub>
11	轴承 BEARING	-
12	轴 SHAFT	45, 3Cr13



## 结构说明

DH(V)系列泵为单级双吸轴向中开蜗壳式离心泵，可以卧式或立式安装，卧式泵的电机可以根据需要放在泵的右端或左端。泵的吸入口和排出口均在泵轴线下方向呈水平方向。检修时只需打开泵盖，不用拆卸管路和电机，即可取出转子进行维修。

## 泵体

泵体的设计压力为1.6MPa和2.5MPa。为了满足世界各国的不同标准，泵的进出口法兰可按GB、ISO、DIN、ANSI及JIS等标准选取。泵的进出口法兰均在泵体上，维修时不用拆卸系统管路只需打开泵盖，即可取出转子进行维修。部分高扬程泵采用双蜗壳设计，以减小径向力，从而延长机封和轴承的使用寿命。

## 泵盖

采用加厚法兰，用较长预紧螺栓与泵体连接，中开面无泄漏。泵盖可以自动校正，便于安装维修。

## 叶轮

优秀水力设计软件设计的高效率双吸叶轮，叶轮进口面积大，进口无涡流，运转平稳，损耗低，噪声低，泵体和叶轮均可配密封环，延长叶轮的使用寿命。对叶轮进行动平衡，确保泵运行平稳，无振动。

## 轴

泵轴完全密封，不接触介质，无腐蚀，使用寿命长；轴径较粗，轴承间距离较短，无振动，从而增加轴的刚度，延长机械密封和轴承的使用寿命；转子部件装配时无需调整，应用碟形弹簧预应力装配，转子部件拆装方便。

## 轴承体

轴承体设有冷却腔，可以满足输送 $\leq 130^{\circ}\text{C}$ 的介质；卧式泵驱动端采用双列深沟球轴承，立式泵驱动端采用双列角接触轴承，承受泵的残余轴向力，保证泵运行平稳；采用油脂润滑，也可以采用封闭式的轴承，轴承设计寿命在10万小时以上。

## 轴封

采用软填料密封或机械密封(非平衡型)，机封不受旋转方向限制。

## DESCRIPTION

DH(V)series pump is of single stage, double suction, axial split case, volute centriugal pump. Horizontal installation or vertical installation. Motor of horizontal pump can be installed in the left or in the right. Suction and discharge are horizontally below the pump shaft centreline. When maintenance or service is needed, just open the pump cover and take out the rotation parts for esay service without dismantle of pipeline and motor.

## PUMP CASING

The design pressure of pump casing is 1.6 Mpa & 2.5Mpa. In order to meet with different flange standard, suction and discharge flanges can be in conformity with GB,ISO,DIN,ANSI and JIS. Suction & discharge are all set in the casing, so it is easy to maintenance the pump:just open the pump cover,and take out the rotation parts for service without dismantle of pipeline.

## PUMP COVER

Thicker flange of pump cover is fastened with pump casing by long bolts with advantages of no leakage.It is very convenient to conduct installation and maintenance work owing to the autocorrelation function of the pump cover

## IMPELLER

High-efficiency double suction impeller, stable operation, low energy cost, low noise, less vibration, and long service life.The pump casing and the impeller may be equipped with sealing rings so as to extend the service life of the impeller. Keep the impeller in dynamic balance to ensure stable vibration-free operation of the pump.

## SHAFT

The pump shaft is totally sealed, no contact with the pumping liquid, it features long service life and no corrosion.As its shaft diameter is large and the distance between bearings small, and there is no vibration in its operation, the rigidity of the shaft is increased, thus extending the service life of the mechanical seal and the bearing. When assembling the rotor components, no adjustment needs to be made; and it is very convenient to disassemble and assemble the rotor components with the prestressing force of the dish spring.

## BEARING UNIT

There is cooling chamber in the bearing unit to ensure Max. pumping temperature  $130^{\circ}\text{C}$ . The driving end of horizontal pump adopting double zanjon ball bearing,the driving end of vertical pump adopting double row angular contact ball bearings to bear remains of axial impact. Bearings are lubricated by grease. Totally-sealed bearing is an alternative option, the service life of bearings are over 100,000 hours.

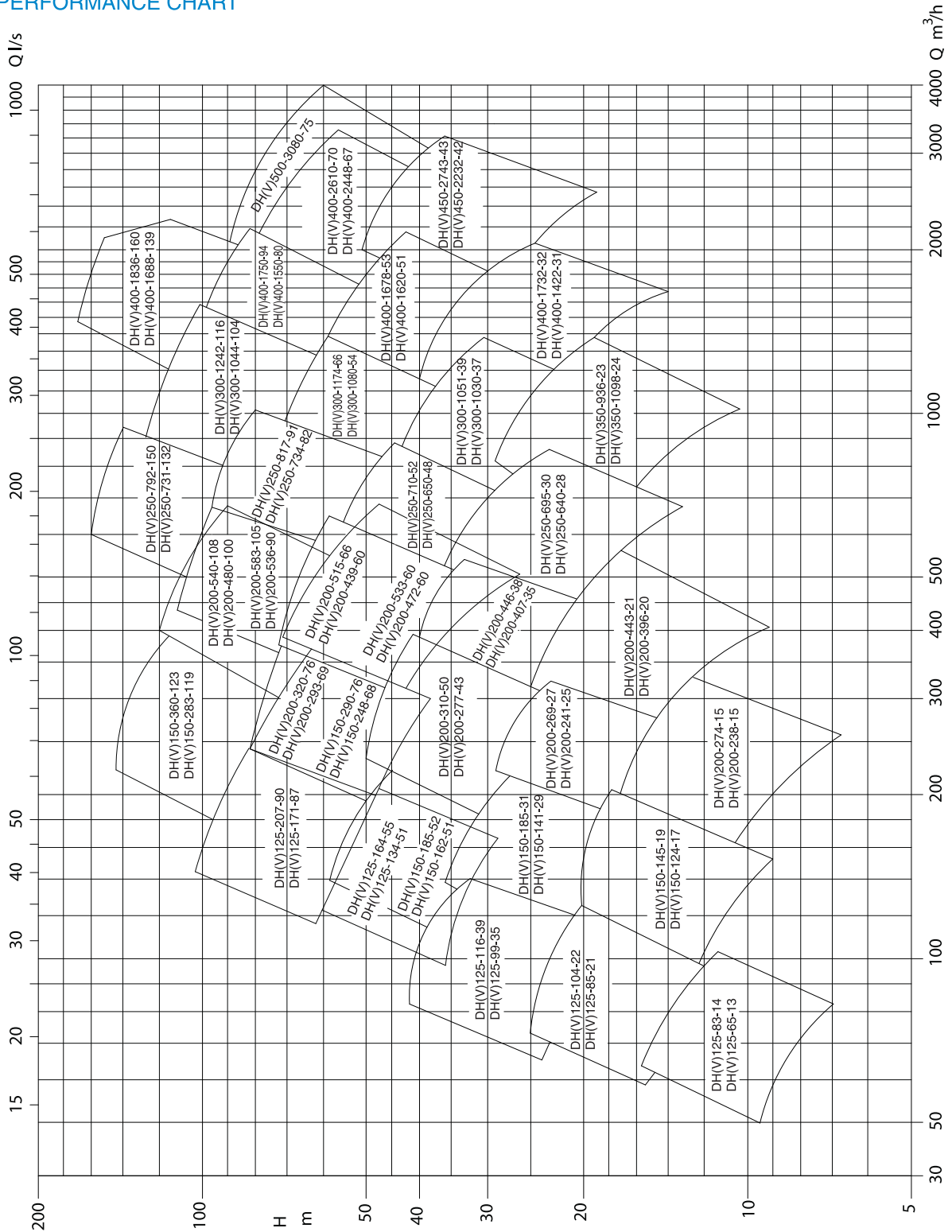
## SHAFT SEAL

Soft packing seal or mechanical seal (non-balance type). No rotation direction limit of mechanical seal.



型谱图

PERFORMANCE CHART



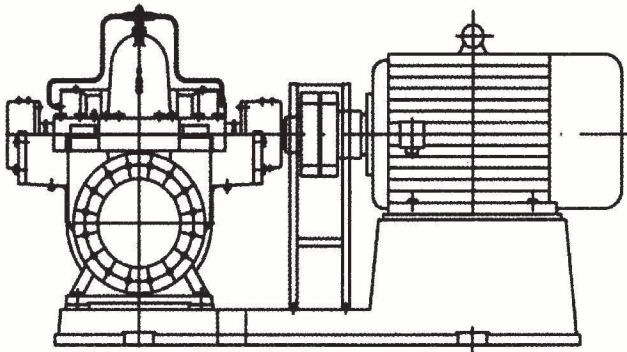
性能参数适用于密度为1kg/dm³和粘度不大于20mm²/s的介质

Data applies to a density of 1 kg/dm³ and a kinematical viscosity of up to max.20 mm²/s

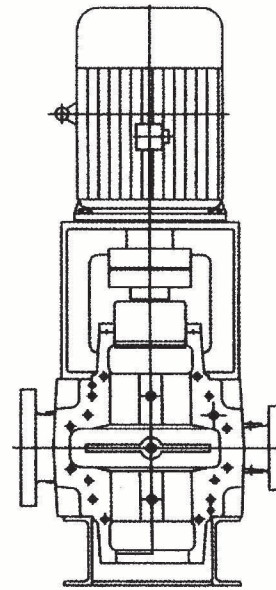
## 安装方式 INSTALLATION TYPE

有两种安装方式——水平安装和立式安装，立式安装可以大大减少占地面积。

Two kinds of installation: Horizontal installation and vertical installation. Vertical installation can save installation space.



卧式 Horizontal



立式 Vertical

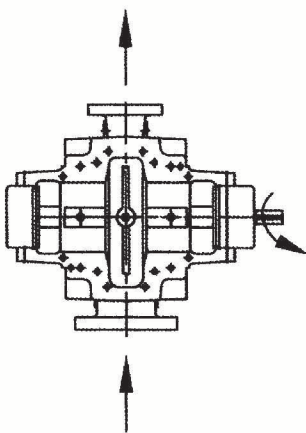
## 转动方向/流动方向 ROTATION DIRECTION/FLOW DIRECTION

从传动端看  
逆时针方向旋转  
Counter clockwise  
Viewed from the  
driving side

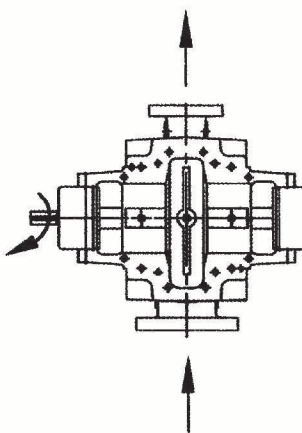
从传动端看  
顺时针方向旋转  
Clockwise  
Viewed from the  
driving side

从传动端看  
逆时针方向旋转  
Counter clockwise  
Viewed from the  
driving side

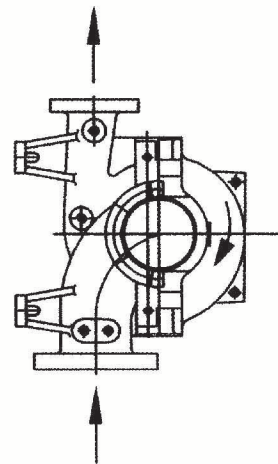
从传动端看  
顺时针方向旋转  
Clockwise  
Viewed from the  
driving side



卧式(俯视图)  
Horizontal(Vertical view)



立式(俯视图)  
Vertical(Vertical view)





性能参数 PERFORMANCE PARAMETERS

型号 TYPE	流量 CAPACITY (m³/h)	扬程 HEAD (m)	转速 SPEED (r/min)	功率 POWER		效率 EFF (%)	必须气蚀余量 NPSHr (m)
				轴功率 SHAFT POWER	电机功率 MOTOR POWER		
DH(V)125-164-55-O	98.4	64	2950	26.4	37	65	5.5
	164	55		33.2		74	
	192	49		35.6		71.5	
-151-47	90.6	55.5	2950	20.4	30	67	5.5
	151	47.5		26.4		74	
	181.2	41		28.6		70.6	
-144-39	86.4	47	2950	17.0	30	65	5.3
	144	39		21.2		72	
	172.8	34		23.2		69	
-137-31	82.2	40	2940	13.8	22	65	5
	137	31		16.3		71	
	156	28		18.3		65	
DH(V)125-134-51-O	80.4	59.5	2950	19.7	30	66	5
	134	51		25.5		73	
	160.8	45		27.4		72	
-133-43	79.8	52	2950	16.9	30	67	5
	133	43.5		21.8		72.2	
	159.6	37		23.2		69.2	
-124-36	74.4	43.5	2930	13.3	18.5	66	5
	124	36		16.9		72	
	148	30		17.3		70	
-113-31	67.8	37	2930	10.5	15	65	4.5
	113	31		13.2		72	
	135.6	27		14.2		70	
DH(V)125-207-90-O	124.2	103.5	2970	54.7	75	64	7.3
	207	90		66.3		76.5	
	248.4	79		70.8		75.5	
-194-77	116.4	90	2970	41.3	75	69	7.2
	194	77		52.5		77.5	
	232.8	69		60.7		72	
-184-63	110.4	75	2970	32.7	55	69	7
	184	63.5		41.9		76	
	220.8	55		45.6		72.5	
-173-50	103.8	62	2950	26.1	37	67	6.9
	173	50		31.4		75	
	207.6	43.5		34.1		72	
DH(V)125-171-87-O	102.6	97.5	2970	40.6	75	67	7.2
	171	87		51.9		78	
	205.2	81		59.5		76	
-153-71	91.8	84.5	2970	32.7	45	64.6	7
	153	71.5		39.7		75	
	183.6	63.5		41.6		76.3	
-144-60	100	66.5	2950	27.9	37	65	6.9
	144	60		32.4		72.5	
	175	56		35.6		75	
-137-49	100	54	2950	22.3	30	66	6.7
	137	49		25.4		72	
	164.4	44.5		27.7		72	
DH(V)150-290-76-O	174	93	2970	58.0	90	76	8
	290	76		72.7		82.5	
	348	65		75.6		81.5	
-280-68	168	76	2970	47.0	75	74	7.8
	280	68		64.0		81	
	336	54.8		63.4		79	
-252-54	151.2	67.5	2970	38.6	55	72	7.5
	252	54		46.9		79	
	302	46		49.1		77	
-242-44	145.2	57	2970	32.2	45	70	7
	242	44		37.4		77.5	
	290.4	37.6		39.4		75.5	
DH(V)150-248-68-O	137	78	2970	38.3	75	76	7.3
	248	68		56.3		81.5	
	297.6	60		64.8		75	
-228-58	136.8	67	2970	33.7	55	74	7.2
	228	58		45.3		79.5	
	273.6	50		48.4		77	
-216-50	129.6	57	2970	27.5	45	73	7.1
	216	50		37.7		78	
	259.2	42.8		40.3		75	
-190-44	114	49.8	2950	21.8	37	71	7
	190	44		29.9		76	
	228	38		31.9		74	
DH(V)150-360-123-O	220.2	131	2980	106.1	200	74	6.5
	360	123		150.7		80	
	440.4	105		163.5		77	
-335-106	201	124	2980	91.7	160	74	6.3
	335	106		121.4		79.6	
	402	92		130.8		77	
-302-90	181.2	107	2980	71.3	110	74	6.1
	302	90		93.3		79.3	
	360	78		99.3		77	
-277-74	166.2	88	2970	53.8	90	74	6
	277	74		70.6		79	
	332.4	64		76.2		76	
DH(V)150-283-119-O	169.8	138	2980	88.0	132	72.5	6.3
	283	119		117.5		78	
	330	104		122.9		76	
-259-103	155.4	118	2980	69.3	110	72	6.2
	259	103		93.9		77.6	
	305	91		99.9		76	
-250-84	150	99	2980	56.1	90	72	6.1
	250	84		74.0		77.3	
	300	74		80.6		75	
-234-69	140.4	82	2970	44.1	75	71	6
	234	69		57.1		77	
	280.8	58		59.9		74	
DH(V)200-533-60-O	319.8	77	2980	88.2	132	76	6.9
	533	60		101.8		85.5	
	639.6	48		100.7		83	
-490-52	294	67	2980	71.5	110	75	6.8
	490	52		82.6		84	
	588	43		83.9		82	
-450-43	272.4	60	2970	60.1	75	74	6.7
	450	43		65.0		81	
	538	34		68.2		73	



性能参数 PERFORMANCE PARAMETERS

型号 TYPE	流量 CAPACITY (m³/h)	扬程 HEAD (m)	转速 SPEED (r/min)	功率 POWER		效率 EFF (%)	必须气蚀余量 NPSHr (m)
				轴功率 SHAFT POWER	电机功率 MOTOR POWER		
-425-40	255	55.5	2970	52.1	75	74	6.6
	425	40		60.1		77	
	510	33		62.8		73	
DH(V)200-472-60-O	296	78	2980	83.8	110	75	6.9
	472	60.5		92.0		84.5	
	556	51		94.1		82	
-436-52	295	67.5	2980	73.3	90	74	6.7
	436	52		75.5		84	
	523.2	44		77.4		81	
-410-46	300	58	2970	64.9	75	73	6.5
	410	46		63.4		81	
	490	38		66.7		76	
-382-43	256	55.6	2970	53.8	75	72	6.5
	382	43		58.1		77	
	520	32		61.2		74	
DH(V)200-540-108-O	290	131	2980	134.3	220	77	9.2
	540	108		189.0		84	
	620	105		217.4		81.5	
-490-88	300	111	2980	120.9	160	75	9.1
	490	88		143.1		82	
	588	75		152.0		79	
-450-75	270	95	2980	95.7	132	73	9.1
	450	75		114.8		80	
	540	63		118.7		78	
-400-61	270	74	2980	76.6	110	71	9
	400	61		85.2		78	
	480	53		91.1		76	
DH(V)200-480-100-O	330	120	2980	143.7	185	75	9.5
	480	100		166.5		78.5	
	576	86		177.4		76	
-440-88	315	100	2980	111.4	160	77	9.5
	440	88		133.1		79.2	
	540	73		143.1		75	
-420-70	300	83	2980	88.6	110	76.5	9.2
	420	70		101.3		79	
	485	59		102.5		76	
-350-62	240	72	2970	65.3	90	72	9
	350	62		75.7		78	
	420	53		79.7		76	
DH(V)125-83-14-O	49.8	16	1440	2.9	5.5	76	3.2
	83	13.8		3.8		82	
	99.6	12.2		4.1		80.5	
-76-12	45.6	13.8	1440	2.3	4	74	3.2
	76	11.8		3.0		81	
	91.2	10.4		3.3		79	
-72-10	43.2	11.7	1430	1.9	3	72	3
	72	9.8		2.4		80.5	
	86.4	8.6		2.6		78	
-69-8	41.4	9.9	1430	1.5	3	72	3
	69	8.2		2.0		78	
	82.8	6.8		2.1		74	
DH(V)125-65-13-O	40	13.5	1440	2.0	4	72	3
	65	12.8		2.8		81	
	78	11.5		3.1		80	
-64-11	40	13	1430	2.0	3	72	3
	64	10.8		2.4		80	
	76.8	9.7		2.6		79	
-61-9	36.3	10.8	1430	1.5	3	70	3
	61	9		1.9		78	
	73.2	7.7		2.0		76	
-58-8	34.8	9.2	1430	1.2	2.2	70	3
	58	7.6		1.6		74	
	69.6	6.4		1.7		72	
DH(V)125-104-22-O	62.4	26	1460	6.0	11	74	3
	104	22.5		8.1		78.5	
	124.8	20		8.9		76	
-99-19	59.4	22	1460	4.9	11	72	2.7
	99	19		6.6		78	
	118.8	17		7.3		75	
-90-16	54	18.5	1440	3.9	7.5	70	2.4
	90	16		5.2		76	
	108	14		5.6		74	
-84-13	50.4	15.5	1440	3.0	5.5	70	2.3
	84	13		4.0		75	
	100.8	11		4.1		73	
DH(V)125-85-21-O	51	24.5	1460	4.7	11	72	3.1
	85	20.7		6.2		77	
	102	18		6.7		75	
-77-18	46.2	21	1440	3.8	7.5	70	2.9
	77	18.1		5.0		76	
	92.4	15.5		5.2		74.5	
-72-15	43.2	18	1440	3.1	5.5	68	2.8
	72	15		3.9		75	
	86.4	13		4.2		73	
-67-12	40.2	14.5	1440	2.4	4	66	2.5
	67	12.5		3.1		74	
	80.4	10.5		3.2		72	
DH(V)125-116-39-O	67.8	42.5	1470	12.5	22	63	3.8
	116	38.8		18.0		68	
	135.6	33.5		19.9		62	
-99-33	59.4	36.5	1460	9.2	15	64	3.6
	99	33		13.2		67.5	
	118.8	29		14.4		65	
-88-27	52.8	30.5	1460	7.4	15	59	3.5
	88	27.5		10.6		63.3	
	105.6	24.5		11.9		59	
-81-22	60	25	1460	6.8	11	60	3.1
	81	22.5		8.1		61	
	104	17		8.3		58	
DH(V)125-99-35-O	59.4	41	1470	9.9	18.5	67	3
	99	35.5		13.1		73	
	118.8	31		14.1		71	
-90-31	54	35.5	1460	8.0	15	65	3
	90	30.8		10.8		70	
	108	26.5		11.5		68	



性能参数 PERFORMANCE PARAMETERS

型号 TYPE	流量 CAPACITY (m³/h)	扬程 HEAD (m)	转速 SPEED (r/min)	功率 POWER		效率 EFF (%)	必须气蚀余量 NPSHr (m)
				轴功率 SHAFT POWER	电机功率 MOTOR POWER		
-76-25	45.6	29	1460	5.8	11	62	2.5
	76	25.5		8.0		66	
	91.2	22.5		8.6		65	
-67-20	40.2	23	1440	4.2	7.5	60	2.5
	67	20		5.7		64	
	80.4	17.5		6.2		62	
DH(V)150-145-19-O	87	21	1460	6.5	15	76	5
	145	19		9.1		82.5	
	174	14		8.1		81.5	
-140-16	84	18.3	1460	5.7	11	74	5
	140	16		7.5		81	
	168	13.7		7.9		79	
-126-13	75.6	16	1440	4.6	7.5	72	4.5
	126	13.5		5.9		79	
	151	12		6.4		77	
-121-11	72.6	13.5	1440	3.8	7.5	70	4.5
	121	11		4.7		77.5	
	145.2	9.4		5.0		74	
DH(V)150-124-17-O	74.4	20.3	1460	5.4	11	76	3
	124	17		7.0		81.5	
	148.8	16.4		8.4		79	
-114-14	68.4	17.5	1440	4.4	7.5	74	3
	114	14.5		5.7		79.5	
	136.8	12.5		6.0		77	
-108-12	64.8	15	1440	3.6	7.5	73	3
	108	12.5		4.7		78	
	129.6	10.7		5.0		75	
-95-11	57	13	1440	2.8	5.5	71	3
	95	11		3.7		76	
	114	9.3		3.9		74	
DH(V)150-185-31-O	105	35	1470	13.5	22	74.2	2.9
	185	31		19.3		81	
	210	29		21.1		78.5	
-166-27	99.6	31.5	1470	11.5	18.5	74	2.8
	166	27		15.3		79.6	
	190	25.6		17.2		77	
-152-22	91.2	26.3	1460	8.9	15	73.5	2.6
	152	22.5		11.7		79.3	
	186.8	20.7		13.5		77.7	
-141-18	84.6	21	1460	6.6	11	73.5	2.5
	141	18.5		9.2		77.5	
	169.2	16		9.7		76	
DH(V)150-141-29-O	103	30.8	1470	11.8	18.5	73	2.5
	141	29		13.9		80	
	185	26		16.6		79	
-134-25	80.4	29.5	1460	8.9	15	72.5	2.3
	134	25.5		12.0		77.6	
	160.8	24.5		13.9		77	
-125-21	78	23	1460	6.8	11	72	2.2
	125	21		9.2		77.3	
	140	20.5		10.3		76.2	
-118-17	77	18.5	1460	5.4	11	72	2.2
	118	17		7.1		77	
	145	15		8.0		74	
DH(V)150-185-52-O	111	55	1480	25.2	45	66	4.1
	185	52		35.9		73	
	222	45		38.3		71	
-167-44	100.2	47	1480	20.0	37	64	3.8
	167	44		27.8		72	
	200.4	37.5		29.2		70	
-155-38	93	41	1470	16.5	30	63	3.6
	155	38		22.6		71	
	186	32		23.5		69	
-135-30	81	34	1470	12.1	22	62	3.4
	135	30.3		16.1		69	
	162	26		16.7		68.5	
DH(V)150-162-52-O	97.2	55	1480	22.7	45	64	4.6
	162	52		31.9		72	
	194.4	46.3		36.0		68	
-142-44	85.2	46	1470	17.5	30	61	4.5
	142	44		24.6		69	
	170.4	39		27.0		67	
-131-37	78.6	39	1470	13.9	30	60	4.3
	131	37.5		20.1		66.5	
	157.2	33		22.1		64	
-115-29	69	32.5	1470	10.2	18.5	60	4
	115	28.7		14.3		63	
	138	25		15.3		61.5	
DH(V)200-274-15-O	164.4	18.7	1470	10.9	18.5	77	2.3
	274	14.8		12.9		85.5	
	328.8	12		13.1		82	
-241-13	144.6	16.4	1460	8.8	15	73	2.2
	241	13.2		10.2		84.5	
	289.2	10.8		10.4		82	
-230-11	138	14	1460	7.3	11	72	2.2
	230	10.6		8.0		82.5	
	276	8.4		8.1		78	
-209-9	125.4	11.6	1460	5.7	11	70	2
	209	8.7		6.4		77.5	
	250.8	6.8		6.4		73	
DH(V)200-238-15-O	142.8	19	1460	9.8	15	75	2.3
	238	15.1		11.6		84.5	
	285.6	12.6		11.9		82	
-212-13	127.2	16.8	1460	8.1	11	72	2.2
	212	13.5		9.3		84	
	254.4	11.6		9.8		82	
-205-11	123	14.2	1460	6.6	11	72	2.2
	205	11.5		7.8		82	
	246	9.3		8.0		78	
-195-9	117	11.8	1460	5.3	11	71	2
	195	9.1		6.2		78	
	234	7.2		6.4		72	
DH(V)200-269-27-O	161.4	31.5	1470	18.3	30	75.5	3.7
	269	27		23.5		84	
	322.8	23.5		25.2		82	





性能参数 PERFORMANCE PARAMETERS

型号 TYPE	流量 CAPACITY (m³/h)	扬程 HEAD (m)	转速 SPEED (r/min)	功率 POWER		效率 EFF (%)	必须气蚀余量 NPSHr (m)
				轴功率 SHAFT POWER	电机功率 MOTOR POWER		
-243-22	145.8	25	1470	13.4	22	74	3.7
	243	21		17.7		82	
	291.6	19		18.9		80	
-223-18	133.8	22	1470	11.1	18.5	72	3.5
	223	18		13.7		80	
	267.6	15.5		14.4		78.5	
-202-14	121.2	18	1460	8.5	15	70	3.3
	202	14.2		10.0		78	
	242.4	12		10.6		75	
DH(V)200-241-25-O	144.6	28	1470	14.5	30	76	8
	241	25		19.3		83	
	289.2	21.5		21.2		80	
-218-21	130.8	25.2	1470	12.1	18.5	74	8
	218	21		15.2		82	
	261.6	17.5		15.8		79	
-196-17	117.6	20	1460	8.9	15	72	7.5
	196	17.5		11.8		79	
	235.2	14.5		11.9		78	
-173-14	103.8	17	1460	6.9	11	70	7.5
	173	13.7		8.5		76	
	207.6	11.5		8.8		74	
DH(V)200-310-50-O	186	54	1480	38.0	75	72	2.9
	310	50		52.7		80	
	372	46		59.7		78	
-281-42	168.6	45	1480	28.7	55	72	2.7
	281	42		40.7		79	
	337.2	36		42.9		77	
-256-31	153.6	35	1480	20.9	37	70	2.6
	256	31.5		28.1		78	
	307.2	28		30.8		76	
-230-26	138	29	1470	16.0	30	68	2.4
	230	26		21.4		76	
	276	24		25.0		72	
DH(V)200-277-43-O	166.2	48	1480	30.0	55	72.5	2.6
	277	43		41.0		79	
	332.4	38.5		45.0		77.5	
-252-37	151.2	42	1480	24.3	45	71	2.5
	252	37		32.5		78	
	302.4	33		35.3		77	
-227-30	136.2	34.5	1470	18.3	30	70	2.5
	227	30.5		24.5		77	
	272.4	27		26.7		75	
-198-24	118.8	27.5	1470	13.1	22	68	2.4
	198	24.5		17.4		76	
	237.6	22		19.2		74	
DH(V)200-328-76-O	196.8	87	1480	63.0	110	74	2.3
	328	76		84.8		80	
	393.6	60		82.4		78	
-292-66	175.2	73	1480	48.4	90	72	3.3
	292	66.5		67.3		78.5	
	350.4	56		69.8		76.5	
-256-56	153.6	62	1480	37.0	75	70	3.1
	256	56		50.7		77	
	307.2	46		50.6		76	
-230-47	138	52.5	1480	29.0	55	68	2.8
	230	47		38.7		76	
	276	37		37.6		74	
DH(V)200-293-69-O	175.8	81	1480	53.1	110	73	4.6
	293	69.5		70.2		79	
	351.6	64		79.6		77	
-272-60	163.2	73	1480	44.7	75	72.5	4.3
	272	60.5		57.4		78	
	326.4	54.5		63.7		76	
-227-53	136.2	59	1480	30.8	55	71	4.1
	227	53		42.5		77	
	272.4	43		42.5		75	
-202-45	121.2	52	1480	25.2	45	68	3.9
	202	45		32.6		76	
	242.4	40		36.2		73	
DH(V)200-443-21-O	265.8	27	1480	25.0	37	78	3.7
	443	21		29.1		87	
	531.6	15.3		26.4		84	
-403-18	241.8	23	1470	20.5	30	74	3.6
	403	18		23.0		86	
	483.6	14		22.5		82	
-378-15	226.8	19	1470	16.3	22	72	3.4
	378	15		18.4		84	
	453.6	12.5		19.3		80	
-349-11	209.4	16	1470	13.0	18.5	70	3.4
	349	11.5		14.2		77	
	418.8	8.5		13.1		74	
DH(V)200-396-20-O	237.6	25.5	1480	21.7	30	76	3.8
	396	20.4		25.6		86	
	475.2	17		26.5		83	
-378-17	226.8	22.5	1470	18.8	30	74	3.6
	378	17		20.6		85	
	453.6	12		18.1		82	
-353-14	211.8	19.5	1470	15.6	22	72	3.4
	353	14.5		16.9		84	
	423.6	9		12.8		81	
-331-11	198.6	16	1470	12.4	18.5	70	3.2
	331	11.5		13.0		80	
	397.2	9		13.0		75	
DH(V)200-446-38-O	267.6	44	1480	42.2	75	76	4.3
	446	38		54.3		85	
	535.2	33.5		59.2		82.5	
-403-31	241.8	37	1480	32.9	55	74	4
	403	31		41.0		83	
	483.6	27		43.9		81	
-371-25	222.6	30	1480	25.2	37	72	3.6
	371	25		31.2		81	
	445.2	21.5		32.6		80	
-331-20	198.6	26	1470	20.1	30	70	3.4
	331	20		23.1		78	
	397.2	17		23.9		77	



性能参数 PERFORMANCE PARAMETERS

型号 TYPE	流量 CAPACITY (m³/h)	扬程 HEAD (m)	转速 SPEED (r/min)	功率 POWER		效率 EFF (%)	必须气蚀余量 NPSHr (m)
				轴功率 SHAFT POWER	电机功率 MOTOR POWER		
DH(V)200-407-35-O	244.2	42.5	1480	37.2	55	76	4.9
	407	35		46.2		84	
	488.4	30		49.2		81	
-367-29	220.2	36	1480	29.2	45	74	4.7
	367	29.5		35.9		82	
	440.4	25		37.9		80	
-335-25	201	30	1480	22.8	37	72	4.5
	335	25		28.8		80	
	402	21		29.9		78	
-292-20	175.2	25	1470	17.0	30	70	4.3
	292	20.5		20.9		78	
	350.4	17.5		22.0		76	
DH(V)200-515-66-O	309	76	1480	86.4	132	74	4.8
	515	66		112.8		82	
	618	59		124.1		80	
-472-54	283.2	62	1480	65.5	110	73	4.6
	472	54.5		86.5		81	
	566.4	48		94.9		78	
-432-43	259.2	50.5	1480	49.5	75	72	4.6
	432	43.5		63.9		80	
	518.4	37		68.7		76	
-396-35	237.6	41	1480	37.9	55	70	4.5
	396	35		48.1		78.5	
	475.2	28		50.3		72	
DH(V)200-439-60-O	263.4	68	1480	65.9	110	74	3.4
	439	60		88.5		81	
	526.8	54		98.0		79	
-403-50	241.8	57	1480	52.1	90	72	3.3
	403	50		68.1		80.5	
	483.6	44		74.3		78	
-375-40	225	46	1480	40.3	75	70	3.1
	375	40		51.0		80	
	450	34.5		57.1		74	
-324-33	194.4	37.5	1480	28.4	45	70	3.1
	324	33		37.3		78	
	388.8	28		40.0		74	
DH(V)200-583-105-O	349.8	123	1480	162.7	280	72	4.3
	583	105		208.3		80	
	699.6	93		227.1		78	
-550-88	330	107	1480	133.5	220	72	4.2
	550	88.5		167.7		79	
	660	78		184.4		76	
-515-75	309	87	1480	103.1	200	71	4.1
	515	75		134.8		78	
	618	67		150.3		75	
-472-61	283.2	73	1480	80.4	132	70	4
	472	61.5		102.6		77	
	566.4	53		111.9		73	
DH(V)200-536-90-O	321.6	105	1480	125.9	220	73	4
	536	90		166.2		79	
	643.2	78		182.1		75	
-490-78	294	92	1480	102.3	200	72	3.8
	490	78		133.4		78	
	588	69		149.3		74	
-446-68	267.6	79	1480	81.1	160	71	3.7
	446	68.5		108.0		77	
	535.2	61		120.1		74	
-403-57	241.8	67	1480	63.0	110	70	3.6
	403	57.5		83.0		76	
	483.6	51		93.2		72	
DH(V)250-695-30-O	417	37.5	1480	55.3	75	77	4
	695	30		65.2		84.5	
	834	25		67.2			
-648-25	388.8	32	1480	44.6	75	76	3.9
	648	25.5		52.3		86	
	777.6	20		52.3		81	
-600-22	360	26	1480	35.4	55	72	3.8
	600	22		42.8		84	
	720	17		42.2		79	
-550-17	330	23	1480	29.5	37	70	3.8
	550	17		32.2		79	
	660	13.5		31.9		76	
DH(V)250-640-28-O	384	35	1480	46.9	75	78	4
	640	28		56.7		86	
	768	23		57.2		84	
-595-24	357	31	1480	39.6	55	76	3.9
	595	24.5		46.7		85	
	714	20		47.4		82	
-560-21	336	27	1480	33.4	45	74	3.8
	560	21		38.1		84	
	672	16.5		37.7		80	
-515-17	309	22	1480	25.7	37	72	3.7
	515	17		29.1		82	
	618	13.5		29.1		78	
DH(V)250-710-52-O	426	60	1480	89.2	160	78	4.9
	710	52		116.9		86	
	852	45		125.7		83	
-630-42	378	50.5	1480	68.4	110	76	4.7
	630	42.5		96.8		84	
	756	37.5		95.3		81	
-570-35	342	43	1480	54.1	90	74	4.6
	570	35.5		66.4		83	
	684	30		69.8		80	
-510-28	306	36	1480	41.7	75	72	4.4
	510	28.5		48.8		81	
	612	24		50.6		79	
DH(V)250-650-48-O	390	57	1480	77.6	132	78	4
	650	48		99.9		85	
	780	41		104.9		83	
-585-40	351	48	1480	60.3	90	76	3.9
	585	40.5		76.8		84	
	702	34		80.2		81	
-530-34	318	41	1480	48.0	75	74	3.8
	530	34.5		60.7		82	
	636	28		61.4		79	



性能参数 PERFORMANCE PARAMETERS

型号 TYPE	流量 CAPACITY (m³/h)	扬程 HEAD (m)	转速 SPEED (r/min)	功率 POWER		效率 EFF (%)	必须气蚀余量 NPSHr (m)
				轴功率 SHAFT POWER	电机功率 MOTOR POWER		
-470-28	282	34	1480	36.3	55	72	3.7
	470	26		45.9		78	
	564	24		47.9		77	
DH(V)250-817-91-O	490	101	1480	180.6	315	74.6	7.8
	817	91		243.8		83	
	980	83		283.9		78	
-756-76	454	86	1480	143.1	250	74.3	7.5
	756	76.5		192.0		82	
	907	67		217.4		76.1	
-706-62	423	72	1480	111.9	185	74.1	7.4
	706	62.5		150.1		80	
	847	55		168.0		75.5	
-648-47	389	56	1480	83.1	132	71.4	7.2
	648	47.5		106.7		75.5	
	778	42		121.0		73.5	
DH(V)250-734-82-O	441	94	1480	153.1	250	73.7	4.4
	734	81.7		199.1		82	
	881	73		229.8		76.2	
-695-68	417	80	1480	126.0	200	72.1	4.2
	695	68		158.8		81	
	834	62		185.2		76	
-655-55	393	64.5	1480	98.6	160	70	4
	655	55		122.6		80	
	786	47		134.6		74.7	
-598-43	359	52	1480	73.4	110	69.2	3.8
	598	43.5		90.8		78	
	717	37		99.9		72.3	
DH(V)250-792-150-O	475	161.5	1480	290.0	560	72	8.2
	792	150		404.3		80	
	950	137		471.1		75.2	
-800-125	570	138	1480	299.5	450	71.5	8.1
	800	125		346.8		78.5	
	894	115		373.7		74.9	
-731-104	522	115.5	1480	230.8	315	71.1	8
	731	104.5		270.1		77	
	820	98		302.2		72.4	
-653-88	391	100	1480	148.2	280	71.8	7.7
	653	88		205.8		76	
	792	78		233.6		72	
DH(V)250-731-132-O	478	145	1480	259.9	450	72.6	8.2
	731	132		332.5		79	
	880	121.5		383.5		75.9	
-718-112	447	126	1480	212.7	355	72.1	8
	718	112		278.9		78.5	
	795	102		299.1		73.8	
-591-99	435	104.5	1480	174.3	315	71	7.9
	591	99		204.2		78	
	850	82.5		264.8		72.1	
-569-83	341	93	1480	124.4	250	69.4	7.7
	569	83		167.0		77	
	683	72		189.6		70.6	
DH(V)300-1051-39-O	631	47.5	1480	105.6	160	77.3	4.9
	1051	39		126.8		88	
	1261	33		138.8		81.6	
-994-33	596	41	1480	87.5	132	76	4.6
	994	33		103.8		86	
	1192	27.5		110.2		81	
-943-27	566	35	1480	78.8	90	68.4	4.5
	943	27		83.5		83	
	1132	22		85.9		78.9	
-871-20	523	27.5	1480	64.0	75	61.2	4.6
	871	20		61.2		77.5	
	1045	13.8		56.0		70.1	
DH(V)300-1030-37-O	618	46	1480	102.0	132	75.9	4.7
	1030	37		119.2		87	
	1236	31		129.7		80.4	
-968-32	581	41	1480	86.5	110	75	4.6
	968	32		98.1		86	
	1162	26		102.8		80	
-914-27	549	35	1480	74.6	90	70.1	4.5
	914	27		80.0		84	
	1097	22		83.0		79.2	
-850-22	510	30	1480	63.0	75	66.1	4.4
	850	22		62.1		82	
	1020	16		62.0		71.6	
DH(V)300-1174-66-O	704	77	1480	184.9	280	79.8	5.6
	1174	66		242.4		87	
	1408	57		260.1		84	
-1080-55	648	65	1480	152.9	250	75	5.4
	1080	55		190.2		85	
	1296	47		204.0		81.3	
-1001-45	601	54	1480	122.7	200	72	5.3
	1001	45.5		149.4		83	
	1201	37		160.0		75.6	
-929-37	557	46	1480	102.9	132	67.8	5.1
	929	37.5		118.5		80	
	1115	32		129.5		75	
DH(V)300-1080-54-O	648	68	1480	152.0	250	78.9	4.6
	1080	54.5		190.8		84	
	1296	45		199.9		79.4	
-976-47	584	57	1480	124.6	200	72.7	4.5
	976	47		151.4		82.5	
	1171	39		158.0		75.7	
-886-40	531	50	1480	99.8	132	72.4	4.5
	886	40.5		121.3		80.5	
	1063	34		126.1		78	
-803-34	482	43	1480	80.0	110	70.5	4.5
	803	34.5		96.1		75.5	
	963	28		99.9		73.5	
DH(V)300-1242-116-O	745	132	1480	339.7	560	78.8	7.5
	1242	116		466.9		84	
	1490	103		505.2		82.7	
-1166-100	700	118	1480	287.2	450	78.3	7.5
	1166	100		380.1		83.5	
	1400	87		419.7		79	



性能参数 PERFORMANCE PARAMETERS

型号 TYPE	流量 CAPACITY (m³/h)	扬程 HEAD (m)	转速 SPEED (r/min)	功率 POWER		效率 EFF (%)	必须气蚀余量 NPSHr (m)
				轴功率 SHAFT POWER	电机功率 MOTOR POWER		
-1084-83	650 1084 1300	100 83 71	1480	232.8 295.1 320.1	355	76 83 78.5	7
-1001-66	601 1001 1201	80.5 66 57	1480	175.1 218.0 238.9	250	75.2 82.5 78	7
DH(V)300-1044-104-O	626 1044 1253	120 104 91	1480	272.7 356.1 389.9	450	75 83 79.6	7
-965-90	579 965 1158	104 90 80	1480	221.5 286.6 319.2	355	74 82.5 79	7
-875-74	525 875 1050	87 74.5 65	1480	169.2 217.7 237.3	250	73.5 81.5 78.3	6.8
-799-62	480 799 959	72 62 56	1480	128.9 167.5 193.9	200	73 80.5 75.4	6.7
DH(V)350-1098-24-O	659 1098 1318	33 24.5 20	1480	79.0 85.2 88.0	110	74.9 86 81.5	5.8
-1044-20	626 1044 1253	27 19.8 15	1480	62.9 66.6 63.0	75	73.1 84.5 81.2	5.8
-1008-15	605 1008 1210	22.5 15.5 11	1480	54.0 51.9 47.7	75	68.6 82 76	5.7
-965-11	579 965 1158	17.5 11.5 8	1480	42.4 37.8 34.1	55	65 80 74	5.6
DH(V)350-936-23-O	562 936 1054	29 23 19	1480	61.0 68.9 74.7	90	72.7 85 73	5.5
-864-20	518 864 1037	26 20 14	1480	51.9 56.0 49.0	75	70.6 84 80.6	5.5
-799-17	480 799 959	22.5 16.7 13	1480	45.0 44.8 44.0	55	65.3 81 77.2	5.2
-700-14	420 700 840	19 13.7 12.5	1480	38.1 33.9 40.8	45	57 77 70	5
DH(V)400-1678-53-O	1007 1678 2013	64 53 46	1480	234.9 275.1 299.0	315	74.7 88 84.3	6.6
-1577-45	946 1577 1892	56 45 37	1480	200.0 223.3 231.0	250	72.1 86.5 82.5	6.5
-1476-36	886 1476 1771	47 36.5 28	1480	161.0 174.6 174.9	200	70.4 84 77.2	6.3
-1361-27	817 1361 1633	37 27.5 21	1480	134.0 129.0 125.0	160	61.4 79 74.7	6.2
DH(V)400-1620-51-O	972 1620 1944	64 51.5 43	1480	216.8 259.6 269.9	315	78.1 87.5 84.3	6.5
-1519-45	912 1519 1823	56 45 36	1480	180.1 215.1 220.8	250	77.2 86.5 80.9	6.2
-1422-37	853 1422 1706	47 37.5 30	1480	152.0 172.8 178.8	200	71.8 84 77.9	6
-1332-30	799 1332 1598	39 30.5 24	1480	125.9 135.7 139.9	160	67.4 81.5 74.6	6
DH(V)400-1750-94-O	1050 1750 2100	107 94 84	1480	382.3 520.7 568.3	630	80 86 84.5	7
-1650-76	990 1650 1980	89 76 67	1480	307.5 399.3 435.1	500	78 85.5 83	7
-1570-62	942 1570 1884	74 62 55	1480	249.7 311.7 346.1	400	76 85 81.5	6.8
-1510-50	906 1510 1812	62 50 43	1480	206.6 246.1 265.1	315	74 83.5 80	6.5
DH(V)400-1550-80-O	930 1550 1860	95 80 75	1480	304.4 399.5 460.3	500	79 84.5 82.5	6.8
-1450-67	870 1450 1740	81 67 57	1480	249.1 316.7 333.3	400	77 83.5 81	6.5
-1360-57	816 1360 1632	70 57 50	1480	207.3 254.2 277.7	315	75 83 80	6.5
-1280-47	768 1280 1536	59 47.5 41	1480	171.3 207.8 217.0	250	72 82 79	6.2
DH(V)400-1836-160-O	1102 1836 2070	180 160 151	1480	670.0 940.8 1025.2	1120	80.6 85 83	7.5
-1735-136	1041 1735 2082	152 136 124	1480	538.4 759.3 909.2	1000	80 84.6 77.3	7.4
-1624-112	974 1624 1948	130 112 99	1480	430.9 567.4 681.8	710	80 84.3 77	7.3
-1537-91	922 1537 1845	107 91 80	1480	344.3 453.3 521.8	630	78 84 77	7.2
DH(V)400-1688-139-O	1013 1688 2026	165 139 119	1480	603.5 764.9 820.4	1000	75.4 83.5 80	6.4

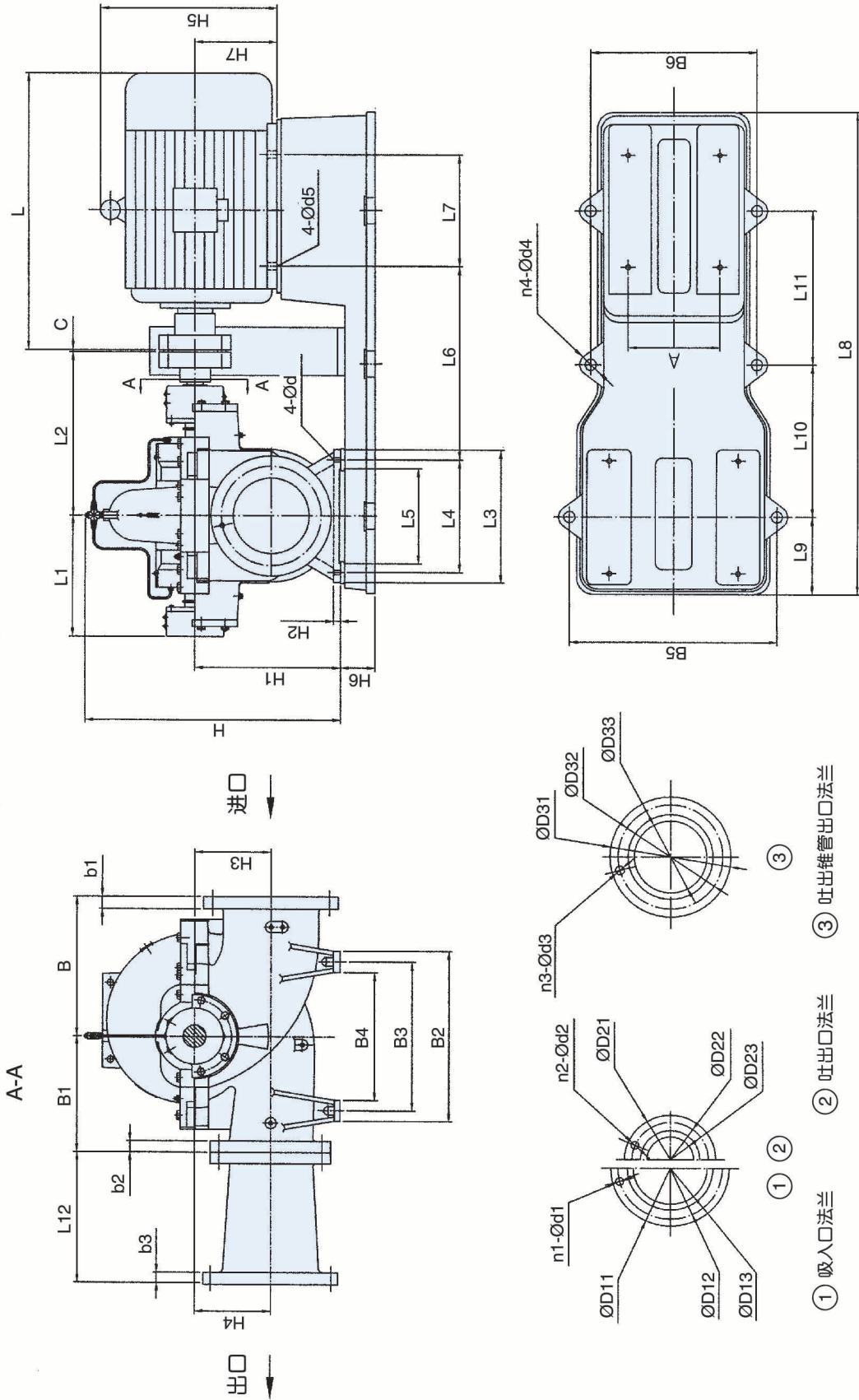


性能参数 PERFORMANCE PARAMETERS

型号 TYPE	流量 CAPACITY (m³/h)	扬程 HEAD (m)	转速 SPEED (r/min)	功率 POWER		效率 EFF (%)	必须气蚀余量 NPSHr (m)
				轴功率 SHAFT POWER	电机功率 MOTOR POWER		
-1573-119	944	142	1480	493.1	800	74	6.2
	1573	119		613.9		83	
	1888	106		689.6		79	
-1451-99	871	117	1480	380.0	630	73	6.2
	1451	99		474.0		82.5	
	1741	87		528.6		78	
-1343-81	806	97	1480	293.6	450	72.5	6.1
	1343	81		381.1		82	
	1611	67		384.1		76.5	
DH(V)400-1732-32-O	1039	42	1480	168.0	200	70.7	7.2
	1732	32		174.4		86.5	
	2078	24		175.0		77.6	
-1692-26	1015	36	1480	142.9	160	69.6	7.1
	1692	26.5		143.6		85	
	2030	19		140.9		74.5	
-1642-21	1050	30.5	1480	123.7	132	70.5	7
	1642	21		113.1		83	
	1886	15.5		107.5		74	
-1420-19	961	24.5	1480	91.6	110	70	6.9
	1420	19		90.7		81	
	1720	12		79.1		71	
DH(V)400-1422-31-O	853	36	1480	115.3	160	72.5	6.3
	1422	31		142.9		84	
	1526	19.5		112.8		71.8	
-1336-26	801	34	1480	104.1	132	71.2	6.3
	1336	26.3		113.9		84	
	1603	21		113.0		81.1	
-1271-22	763	29	1480	88.1	110	68.4	6.7
	1271	22.5		94.9		82	
	1525	18		92.7		80.6	
-1188-18	713	24.5	1480	75.0	90	63.4	6.7
	1188	17.8		73.8		78	
	1426	13		70.0		72.1	
DH(V)450-2743-43-O	1646	54.6	1480	326.2	450	75	9.5
	2743	43.5		371.2		87.5	
	3292	35		427.3		73.4	
-2635-35	1581	46.2	1480	258.2	355	77	9.5
	2635	35		293.6		85.5	
	3162	27.6		337.9		70.3	
-2563-27	1538	37.8	1480	201.1	280	78.7	9
	2563	27.5		228.4		84	
	3076	21		262.5		67	
-2484-21	1490	30.7	1480	158.0	220	78.8	9
	2484	21.5		179.5		81	
	2981	16.3		206.7		64	
DH(V)450-2232-42-O	1339	53.4	1480	263.0	400	74	9
	2232	42		295.0		86.5	
	2678	34.2		343.4		72.6	
-2088-36	1253	47.3	1480	213.4	315	75.6	9
	2088	36		242.2		84.5	
	2505.5	28.3		278.5		69.3	
-1987-30	1192	39	1480	174.1	250	72.7	8.8
	1987	30		197.9		82	
	2384.5	22.6		227.4		64.5	
-1858-25	1114.5	33.2	1480	141.9	200	71	8.8
	1858	25		161.1		78.5	
	2229	20		185.3		65.5	
DH(V)400-2610-70-O	1566	85	1480	467.0	630	77.6	7
	2610	70		562.0		88.5	
	3132	60		600.4		85.2	
-2430-60	1458	74	1480	398.0	560	73.8	6.5
	2430	60		456.2		87	
	2916	50		470.8		84.3	
-2232-50	1339	64	1480	328.1	400	71.1	6
	2232	50		353.3		86	
	2678	42		369.8		82.8	
-2072-39	1242	52	1480	281.8	315	62.4	5.7
	2072	39		271.6		81	
	2500	32		272.2		80	
DH(V)400-2448-67-O	1469	83	1480	418.0	560	79.4	6
	2448	67		507.4		88	
	2938	57		522.8		87.2	
-2268-59	1361	73	1480	354.9	500	76.2	5.8
	2268	59.5		422.2		87	
	2722	49		427.7		84.9	
-2088-50	1253	64	1480	297.8	400	73.3	5.7
	2088	50		334.4		85	
	2506	43		346.7		84.6	
-1944-41	1166	53	1480	253.7	315	66.3	5.6
	1944	41.5		264.6		83	
	2333	34		269.9		80	
DH(V)500-3080-75-O	2330	84.5	1480	624.7	800	85.8	7.5
	3080	75		714.6		88	
	3778	60		752.5		82	
-2850-72	2250	81.5	1480	616.3	710	81	7.5
	2850	72.5		646.5		87	
	3420	63.5		698.0		84.7	
-2640-67	2100	76.5	1480	539.9	630	81	7.5
	2640	67		559.9		86	
	3170	57		607.3		81	
-2450-63	1960	70.5	1480	464.4	560	81	7.5
	2450	63		494.3		85	
	2940	54		540.2		80	

### DH型泵外形及安装尺寸图 (带底座)

Outline & installing Dimensions of Type DH Pumps(With Base Plate)



注：如需要DV立式单级双吸泵外形安装尺寸，请来电洽询。



## 外形及安装尺寸 INSTALLATION DIMENSIONS

(毫米: mm)

泵型号 PUMP TYPE	电机型号 MOTOR TYPE	L	L1	L2	L3	L4	L5	L6	L7	L8	L9	L10	L11	B	B1	B2	B4	B5	B6	H	H1	H2	H3	H4	H5	H6	H7	A	d	d4	d5	n4	C
DH125-164-55-O	Y200L2-2	710	315	415	320	270	210	526	305	1250	206	780	-	300	300	410	270	550	550	589	315	32	140	140	475	110	200	318	18.5	25	19	4	3
DH125-151-47	Y200L1-2	710	315	415	320	270	210	526	305	1250	206	780	-	300	300	410	270	550	550	589	315	32	140	140	475	110	200	318	18.5	25	19	4	3
DH125-144-39	Y200L1-2	710	315	415	320	270	210	526	305	1250	206	780	-	300	300	410	270	550	550	589	315	32	140	140	475	110	200	318	18.5	25	19	4	3
DH125-137-31	Y180M-2	670	315	415	320	270	210	514	241	1222	206	780	-	300	300	410	270	550	550	589	315	32	140	140	430	110	180	279	18.5	25	15	4	3
DH125-134-51-O	Y200L1-2	710	315	415	320	270	210	526	305	1250	206	780	-	300	300	410	270	550	550	589	315	32	140	140	475	110	200	318	18.5	25	19	4	3
DH125-133-43	Y200L1-2	710	315	415	320	270	210	526	305	1250	206	780	-	300	300	410	270	550	550	589	315	32	140	140	475	110	200	318	18.5	25	19	4	3
DH125-124-36	Y160L-2	645	315	415	320	270	210	501	254	1184	206	780	-	300	300	410	270	550	550	589	315	32	140	140	385	90	160	254	18.5	25	15	4	3
DH125-113-31	Y160M2-2	600	315	415	320	270	210	501	210	1184	206	780	-	300	300	410	270	550	550	589	315	32	140	140	385	90	160	254	18.5	25	15	4	3
DH125-207-90-O	Y280S-2	1000	315	415	320	270	210	614	368	1485	206	933	-	300	300	410	270	550	675	589	315	32	140	140	640	110	280	457	18.5	30	24	4	4
DH125-194-77	Y280S-2	1000	315	415	320	270	210	614	368	1485	206	933	-	300	300	410	270	550	675	589	315	32	140	140	640	110	280	457	18.5	30	24	4	4
DH125-184-63	Y250M-2	925	315	415	320	270	210	592	349	1390	206	875	-	300	300	410	270	550	602	589	315	32	140	140	575	110	250	406	18.5	25	24	4	4
DH125-173-50	Y200L2-2	710	315	415	320	270	210	527	305	1250	206	780	-	300	300	410	270	550	550	589	315	32	140	140	475	110	200	318	18.5	25	19	4	4
DH125-171-87-O	Y280S-2	1000	315	415	320	270	210	614	368	1485	206	933	-	300	300	410	270	550	675	589	315	32	140	140	640	110	280	457	18.5	30	24	4	4
DH125-153-71	Y225M-2	810	315	415	320	270	210	543	311	1310	206	826	-	300	300	410	270	550	550	589	315	32	140	140	530	110	225	356	18.5	25	19	4	4
DH125-144-60	Y200L2-2	710	315	415	320	270	210	527	305	1250	206	780	-	300	300	410	270	550	550	589	315	32	140	140	475	110	200	318	18.5	25	19	4	4
DH125-137-49	Y200L1-2	710	315	415	320	270	210	527	305	1250	206	780	-	300	300	410	270	550	550	589	315	32	140	140	475	110	200	318	18.5	25	19	4	4
DH150-290-76-O	Y280M-2	1050	315	415	320	270	210	614	419	1485	206	933	-	330	330	470	330	550	675	634	355	32	170	170	640	110	280	457	18.5	30	24	4	4
DH150-280-68	Y280S-2	1000	315	415	320	270	210	614	368	1485	206	933	-	330	330	470	330	550	675	634	355	32	170	170	640	110	280	457	18.5	30	24	4	4
DH150-252-54	Y250M-2	925	315	415	320	270	210	592	349	1390	206	875	-	330	330	470	330	550	602	634	355	32	170	170	575	110	250	406	18.5	25	24	4	4
DH150-242-44	Y225M-2	810	315	415	320	270	210	543	311	1310	206	826	-	330	330	470	330	550	550	634	355	32	170	170	530	110	225	356	18.5	25	19	4	4
DH150-248-68-O	Y280S-2	1000	315	415	320	270	210	614	368	1485	206	933	-	330	330	470	330	550	675	634	355	32	170	170	640	110	280	457	18.5	30	24	4	4
DH150-228-58	Y250M-2	925	315	415	320	270	210	592	349	1390	206	875	-	330	330	470	330	550	602	634	355	32	170	170	575	110	250	406	18.5	25	24	4	4
DH150-216-50	Y225M-2	810	315	415	320	270	210	543	311	1310	206	826	-	330	330	470	330	550	550	634	355	32	170	170	530	110	225	356	18.5	25	19	4	4
DH150-190-44	Y200L2-2	710	315	415	320	270	210	527	305	1250	206	780	-	330	330	470	330	550	550	634	355	32	170	170	475	110	200	318	18.5	25	19	4	4
DH150-360-123-O	Y315L2-2	1295	381	515	320	270	210	740	508	1700	206	1180	-	330	330	470	330	550	725	664	355	36	170	170	770	130	315	508	18.5	30	28	4	4
DH150-335-106	Y315L1-2	1210	381	515	320	270	210	740	508	1700	206	1180	-	330	330	470	330	550	725	664	355	36	170	170	770	130	315	508	18.5	30	28	4	4
DH150-302-90	Y315S-2	1155	381	515	320	270	210	740	457	1700	206	1180	-	330	330	470	330	550	725	664	355	36	170	170	770	130	315	508	18.5	30	28	4	4
DH150-277-74	Y280M-2	1050	381	515	320	270	210	714	419	1585	206	1080	-	330	330	470	330	550	675	664	355	36	170	170	640	110	280	457	18.5	30	24	4	4



### 外形及安装尺寸 INSTALLATION DIMENSIONS

(毫米: mm)

泵型号 PUMP TYPE	电机型号 MOTOR TYPE	L	L1	L2	L3	L4	L5	L6	L7	L8	L9	L10	L11	B	B1	B2	B4	B5	B6	H	H1	H2	H3	H4	H5	H6	H7	A	d	d4	d5	n4	C	
DH150-283-119-O	Y315M-2	1210	381	515	320	270	210	740	508	1700	206	1180	-	330	330	470	330	550	725	664	355	36	170	170	170	770	130	315	508	18.5	30	28	4	4
DH150-259-103	Y315S-2	1155	381	515	320	270	210	740	457	1700	206	1180	-	330	330	470	330	550	725	664	355	36	170	170	170	770	130	315	508	18.5	30	28	4	4
DH150-250-84	Y280M-2	1050	381	515	320	270	210	714	419	1580	206	1080	-	370	370	530	370	720	720	694	400	36	200	200	200	640	130	280	457	24	25	24	4	4
DH150-234-69	Y280S-2	1000	381	515	320	270	210	714	368	1585	206	1080	-	330	330	470	330	550	675	664	355	36	170	170	170	640	110	280	457	18.5	30	24	4	4
DH200-533-60-O	Y315M-2	1210	381	515	390	340	250	705	457	1740	240	1100	-	370	370	530	370	720	720	694	400	36	200	200	200	770	130	315	508	24	30	28	4	4
DH200-490-52	Y315S-2	1155	381	515	390	340	250	705	406	1740	240	1100	-	370	370	530	370	720	720	694	400	36	200	200	200	770	130	315	508	24	30	28	4	4
DH200-450-43	Y280S-2	1000	381	515	390	340	250	679	368	1640	240	1040	-	370	370	530	370	720	720	694	400	36	200	200	200	640	130	280	457	24	25	24	4	4
DH200-425-40	Y280S-2	1000	381	515	390	340	250	679	368	1640	240	1040	-	370	370	530	370	720	720	694	400	36	200	200	200	640	130	280	457	24	25	24	4	4
DH200-472-60-O	Y315S-2	1155	381	515	390	340	250	705	406	1740	240	1100	-	370	370	530	370	720	720	694	400	36	200	200	200	770	130	315	508	24	30	28	4	4
DH200-436-52	Y280M-2	1050	381	515	390	340	250	679	419	1640	240	1040	-	370	370	530	370	720	720	694	400	36	200	200	200	640	130	280	457	24	25	24	4	4
DH200-410-46	Y280S-2	1000	381	515	390	340	250	679	368	1640	240	1040	-	370	370	530	370	720	720	694	400	36	200	200	200	640	130	280	457	24	25	24	4	4
DH200-382-43	Y280S-2	1000	381	515	390	340	250	679	368	1640	240	1040	-	370	370	530	370	720	720	694	400	36	200	200	200	640	130	280	457	24	25	24	4	4
DH200-490-88	Y315L1-2	1210	381	515	390	340	250	705	508	1740	240	1100	-	370	370	530	370	720	720	714	400	36	200	200	200	770	130	315	508	24	30	28	4	4
DH200-450-75	Y315M-2	1240	381	515	390	340	250	705	457	1740	240	1100	-	370	370	530	370	720	720	714	400	36	200	200	200	770	130	315	508	24	30	28	4	4
DH200-400-61	Y315S-2	1155	381	515	390	340	250	705	406	1740	240	1100	-	370	370	530	370	720	720	714	400	36	200	200	200	770	130	315	508	24	30	28	4	4
DH200-480-100-O	Y315L2-2	1295	381	515	390	340	250	705	508	1740	240	1100	-	370	370	530	370	720	720	714	400	36	200	200	200	770	130	315	508	24	30	28	4	4
DH200-440-88	Y315L1-2	1210	381	515	390	340	250	705	508	1740	240	1100	-	370	370	530	370	720	720	714	400	36	200	200	200	770	130	315	508	24	30	28	4	4
DH200-420-70	Y315S-2	1155	381	515	390	340	250	705	406	1740	240	1100	-	370	370	530	370	720	720	714	400	36	200	200	200	770	130	315	508	24	30	28	4	4
DH200-350-62	Y280M-2	1050	381	515	390	340	250	679	419	1640	240	1040	-	370	370	530	370	720	720	714	400	36	200	200	200	640	130	280	457	24	25	24	4	4
DH125-83-14-O	Y132S-4	470	315	415	320	270	210	452	140	1050	206	660	-	300	300	410	270	550	400	589	315	32	140	140	140	315	90	132	216	18.5	20	12	4	3
DH125-76-12	Y112M-4	400	315	415	320	270	210	413	140	1050	206	660	-	300	300	410	270	550	400	589	315	32	140	140	140	265	90	112	190	18.5	20	12	4	3
DH125-72-10	Y100L2-4	380	315	415	320	270	210	406	140	1050	206	660	-	300	300	410	270	550	400	589	315	32	140	140	140	245	90	100	160	18.5	20	12	4	3
DH125-69-8	Y100L2-4	380	315	415	320	270	210	406	140	1050	206	660	-	300	300	410	270	550	400	589	315	32	140	140	140	245	90	100	160	18.5	20	12	4	3
DH125-65-13-O	Y112M-4	400	315	415	320	270	210	413	140	1050	206	660	-	300	300	410	270	550	400	589	315	32	140	140	140	285	90	112	190	18.5	20	12	4	3
DH125-64-11	Y100L2-4	380	315	415	320	270	210	406	140	1050	206	660	-	300	300	410	270	550	400	589	315	32	140	140	140	245	90	100	160	18.5	20	12	4	3
DH125-61-9	Y100L2-4	380	315	415	320	270	210	406	140	1050	206	660	-	300	300	410	270	550	400	589	315	32	140	140	140	245	90	100	160	18.5	20	12	4	3
DH125-58-8	Y100L1-4	380	315	415	320	270	210	406	140	1050	206	660	-	300	300	410	270	550	400	589	315	32	140	140	140	245	90	100	160	18.5	20	12	4	3





## 外形及安装尺寸 INSTALLATION DIMENSIONS

(毫米: mm)

泵型号 PUMP TYPE	电机型号 MOTOR TYPE	L	L1	L2	L3	L4	L5	L6	L7	L8	L9	L10	L11	B	B1	B2	B4	B5	B6	H	H1	H2	H3	H4	H5	H6	H7	A	d	d4	d5	n4	C	
DH125-104-22-O	Y160M-4	600	315	415	320	270	210	501	210	1184	206	780	-	300	300	410	270	550	550	589	315	32	140	140	140	385	90	160	254	18.5	25	15	4	3
DH125-99-19	Y160M-4	600	315	415	320	270	210	501	210	1184	206	780	-	300	300	410	270	550	550	589	315	32	140	140	140	385	90	160	254	18.5	25	15	4	3
DH125-90-16	Y132M-4	508	315	415	320	270	210	452	178	1050	206	660	-	300	300	410	270	550	400	589	315	32	140	140	140	315	90	132	216	18.5	20	12	4	3
DH125-84-13	Y132S-4	470	315	415	320	270	210	452	140	1050	206	660	-	300	300	410	270	550	400	589	315	32	140	140	140	315	90	132	216	18.5	20	12	4	3
DH125-85-21-O	Y160M-4	600	315	415	320	270	210	501	210	1184	206	780	-	300	300	410	270	550	550	589	315	32	140	140	140	385	90	160	254	18.5	25	15	4	3
DH125-77-18	Y132M-4	508	315	415	320	270	210	452	178	1050	206	660	-	300	300	410	270	550	400	589	315	32	140	140	140	315	90	132	216	18.5	20	12	4	3
DH125-72-15	Y132S-4	470	315	415	320	270	210	452	140	1050	206	660	-	300	300	410	270	550	400	589	315	32	140	140	140	315	90	132	216	18.5	20	12	4	3
DH125-67-12	Y112M-4	400	315	415	320	270	210	413	140	1050	206	660	-	300	300	410	270	550	400	589	315	32	140	140	140	265	90	112	190	18.5	20	12	4	3
DH125-116-39-O	Y180L-4	710	315	415	320	270	210	515	279	1222	206	780	-	330	330	410	270	550	550	624	315	32	140	140	140	430	110	180	279	18.5	25	15	4	4
DH125-99-33	Y160L-4	645	315	415	320	270	210	502	254	1184	206	780	-	330	330	410	270	550	550	624	315	32	140	140	140	385	90	160	254	18.5	25	15	4	4
DH125-88-27	Y160L-4	645	315	415	320	270	210	502	254	1184	206	780	-	330	330	410	270	550	550	624	315	32	140	140	140	385	90	160	254	18.5	25	15	4	4
DH125-81-22	Y160M-4	600	315	415	320	270	210	502	210	1184	206	780	-	330	330	410	270	550	550	624	315	32	140	140	140	385	90	160	254	18.5	25	15	4	4
DH125-99-35-O	Y180M-4	670	315	415	320	270	210	515	241	1222	206	780	-	330	330	410	270	550	550	624	315	32	140	140	140	430	110	180	279	18.5	25	15	4	4
DH125-90-31	Y160L-4	645	315	415	320	270	210	502	254	1184	206	780	-	330	330	410	270	550	550	624	315	32	140	140	140	385	90	160	254	18.5	25	15	4	4
DH125-76-25	Y160M-4	600	315	415	320	270	210	502	210	1184	206	780	-	330	330	410	270	550	550	624	315	32	140	140	140	385	90	160	254	18.5	25	15	4	4
DH125-67-20	Y132M-4	508	315	415	320	270	210	453	178	1050	206	660	-	330	330	410	270	550	400	624	315	32	140	140	140	315	90	132	216	18.5	20	12	4	4
DH150-145-19-O	Y160L-4	645	315	415	320	270	210	502	254	1184	206	780	-	330	330	470	330	550	550	634	355	32	170	170	170	385	90	160	254	18.5	25	15	4	4
DH150-140-16	Y160M-4	600	315	415	320	270	210	502	210	1184	206	780	-	330	330	470	330	550	550	634	355	32	170	170	170	385	90	160	254	18.5	25	15	4	4
DH150-126-13	Y132M-4	508	315	415	320	270	210	453	178	1050	206	660	-	330	330	470	330	550	400	634	355	32	170	170	170	315	90	132	216	18.5	20	12	4	4
DH150-121-11	Y132M-4	508	315	415	320	270	210	453	178	1050	206	660	-	330	330	470	330	550	400	634	355	32	170	170	170	315	90	132	216	18.5	20	12	4	4
DH150-124-17-O	Y160M-4	600	315	415	320	270	210	502	210	1184	206	780	-	330	330	470	330	550	550	634	355	32	170	170	170	385	90	160	254	18.5	25	15	4	4
DH150-114-14	Y132M-4	508	315	415	320	270	210	453	178	1050	206	660	-	330	330	470	330	550	400	634	355	32	170	170	170	315	90	132	216	18.5	20	12	4	4
DH150-108-12	Y132M-4	508	315	415	320	270	210	453	178	1050	206	660	-	330	330	470	330	550	400	634	355	32	170	170	170	315	90	132	216	18.5	20	12	4	4
DH150-95-11	Y132S-4	470	315	415	320	270	210	453	140	1050	206	660	-	330	330	470	330	550	400	634	355	32	170	170	170	315	90	132	216	18.5	20	12	4	4
DH150-185-31-O	Y180L-4	710	315	415	320	270	210	515	241	1222	206	780	-	330	330	470	330	550	550	664	355	32	170	170	170	430	110	180	279	18.5	25	15	4	4
DH150-166-27	Y180M-4	670	315	415	320	270	210	515	241	1222	206	780	-	330	330	470	330	550	550	664	355	32	170	170	170	430	110	180	279	18.5	25	15	4	4
DH150-152-22	Y160L-4	645	315	415	320	270	210	502	254	1184	206	780	-	330	330	470	330	550	550	664	355	32	170	170	170	385	90	160	254	18.5	25	15	4	4
DH150-141-18	Y160M-4	600	315	415	320	270	210	502	210	1184	206	780	-	330	330	470	330	550	550	664	355	32	170	170	170	385	90	160	254	18.5	25	15	4	4



## 外形及安装尺寸 INSTALLATION DIMENSIONS

(毫米: mm)

泵型号 PUMP TYPE	电机型号 MOTOR TYPE	L	L1	L2	L3	L4	L5	L6	L7	L8	L9	L10	L11	B	B1	B2	B4	B5	B6	H	H1	H2	H3	H4	H5	H6	H7	A	d	d4	d5	n4	C
DH150-141-29-O	Y160L-4	645	315	415	320	270	210	502	254	1184	206	780	-	330	330	470	330	550	550	664	355	32	170	170	385	90	160	254	18.5	25	15	4	4
DH150-134-25	Y160L-4	645	315	415	320	270	210	502	254	1184	206	780	-	330	330	470	330	550	550	664	355	32	170	170	385	90	160	254	18.5	25	15	4	4
DH150-125-21	Y160M-4	600	315	415	320	270	210	502	210	1184	206	780	-	330	330	470	330	550	550	664	355	32	170	170	385	90	160	254	18.5	25	15	4	4
DH150-118-17	Y160M-4	600	315	415	320	270	210	502	210	1184	206	780	-	330	330	470	330	550	550	664	355	32	170	170	385	90	160	254	18.5	25	15	4	4
DH150-185-52-O	Y225M-4	840	315	415	320	270	210	573	311	1310	206	826	-	370	370	470	330	550	550	699	355	32	170	170	530	110	225	356	18.5	25	19	4	4
DH150-167-44	Y225S-4	815	315	415	320	270	210	573	286	1310	206	826	-	370	370	470	330	550	550	699	355	32	170	170	530	110	225	356	18.5	25	19	4	4
DH150-155-38	Y200L-4	710	315	415	320	270	210	527	305	1250	206	780	-	370	370	470	330	550	550	699	355	32	170	170	475	110	200	318	18.5	25	19	4	4
DH150-135-30	Y180L-4	710	315	415	320	270	210	515	279	1222	206	780	-	370	370	470	330	550	550	699	355	32	170	170	430	110	180	279	18.5	25	15	4	4
DH150-162-52-O	Y225M-4	840	315	415	320	270	210	573	311	1310	206	826	-	370	370	470	330	550	550	699	355	32	170	170	530	110	225	356	18.5	25	19	4	4
DH150-142-44	Y200L-4	710	315	415	320	270	210	527	305	1250	206	780	-	370	370	470	330	550	550	699	355	32	170	170	475	110	200	318	18.5	25	19	4	4
DH150-131-37	Y200L-4	710	315	415	320	270	210	527	305	1250	206	780	-	370	370	470	330	550	550	699	355	32	170	170	475	110	200	318	18.5	25	19	4	4
DH150-115-29	Y180M-4	670	315	415	320	270	210	515	241	1222	206	780	-	370	370	470	330	550	550	699	355	32	170	170	430	110	180	279	18.5	25	15	4	4
DH200-274-15-O	Y180M-4	670	381	515	390	340	250	580	241	1345	240	870	-	370	370	530	370	620	510	694	400	36	200	200	430	110	180	279	24	25	15	4	4
DH200-241-13	Y160L-4	645	381	515	390	340	250	567	254	1310	240	845	-	370	370	530	370	620	480	694	400	36	200	200	385	110	160	254	24	25	15	4	4
DH200-230-11	Y160M-4	600	381	515	390	340	250	567	210	1310	240	845	-	370	370	530	370	620	480	694	400	36	200	200	385	110	160	254	24	25	15	4	4
DH200-209-9	Y160M-4	600	381	515	390	340	250	567	210	1310	240	845	-	370	370	530	370	620	480	694	400	36	200	200	385	110	160	254	24	25	15	4	4
DH200-238-15-O	Y160L-4	645	381	515	390	340	250	567	254	1310	240	845	-	370	370	530	370	620	480	694	400	36	200	200	385	110	160	254	24	25	15	4	4
DH200-212-13	Y160M-4	600	381	515	390	340	250	567	210	1310	240	845	-	370	370	530	370	620	480	694	400	36	200	200	385	110	160	254	24	25	15	4	4
DH200-205-11	Y160M-4	600	381	515	390	340	250	567	210	1310	240	845	-	370	370	530	370	620	480	694	400	36	200	200	385	110	160	254	24	25	15	4	4
DH200-195-9	Y160M-4	600	381	515	390	340	250	567	210	1310	240	845	-	370	370	530	370	620	480	694	400	36	200	200	385	110	160	254	24	25	15	4	4
DH200-269-27-O	Y200L-4	710	381	515	390	340	250	592	305	1385	240	915	-	370	370	530	370	620	620	714	400	36	200	200	475	110	200	318	24	25	19	4	4
DH200-243-22	Y180L-4	710	381	515	390	340	250	580	279	1345	240	870	-	370	370	530	370	620	510	714	400	36	200	200	430	110	180	279	24	25	15	4	4
DH200-223-18	Y180M-4	670	381	515	390	340	250	580	241	1345	240	870	-	370	370	530	370	620	510	714	400	36	200	200	430	110	180	279	24	25	15	4	4
DH200-202-14	Y160L-4	645	381	515	390	340	250	567	254	1310	240	845	-	370	370	530	370	620	480	714	400	36	200	200	385	110	160	254	24	25	15	4	4
DH200-241-25-O	Y200L-4	710	381	515	390	340	250	592	305	1385	240	915	-	370	370	530	370	620	620	714	400	36	200	200	475	110	200	318	24	25	19	4	4
DH200-218-21	Y180M-4	670	381	515	390	340	250	580	241	1345	240	870	-	370	370	530	370	620	510	714	400	36	200	200	430	110	180	279	24	25	15	4	4
DH200-196-17	Y160L-4	645	381	515	390	340	250	567	254	1310	240	845	-	370	370	530	370	620	480	714	400	36	200	200	385	110	160	254	24	25	15	4	4
DH200-173-14	Y160M-4	600	381	515	390	340	250	567	210	1310	240	845	-	370	370	530	370	620	480	714	400	36	200	200	385	110	160	254	24	25	15	4	4



## 外形及安装尺寸 INSTALLATION DIMENSIONS

(毫米: mm)

泵型号 PUMP TYPE	电机型号 MOTOR TYPE	L	L1	L2	L3	L4	L5	L6	L7	L8	L9	L10	L11	B	B1	B2	B4	B5	B6	H	H1	H2	H3	H4	H5	H6	H7	A	d	d4	d5	n4	C
DH200-310-50-O	Y280S-4	1000	381	515	390	340	250	679	368	1640	240	1040	-	370	370	530	370	720	720	744	400	36	200	200	640	130	280	457	24	25	24	4	4
DH200-281-42	Y250M-4	925	381	515	390	340	250	657	349	1520	240	1000	-	370	370	530	370	720	720	744	400	36	200	200	575	130	250	406	24	25	24	4	4
DH200-256-31	Y225S-4	815	381	515	390	340	250	638	286	1440	240	965	-	370	370	530	370	720	570	744	400	36	200	200	530	110	225	356	24	25	19	4	4
DH200-230-26	Y200L-4	710	381	515	390	340	250	592	305	1385	240	915	-	370	370	530	370	620	620	744	400	36	200	200	475	110	200	318	24	25	19	4	4
DH200-277-43-O	Y250M-4	925	381	515	390	340	250	657	349	1520	240	1000	-	370	370	530	370	720	720	744	400	36	200	200	575	130	250	406	24	25	24	4	4
DH200-252-37	Y225M-4	840	381	515	390	340	250	638	311	1440	240	965	-	370	370	530	370	720	570	744	400	36	200	200	530	110	225	356	24	25	19	4	4
DH200-227-30	Y200L-4	710	381	515	390	340	250	592	305	1385	240	915	-	370	370	530	370	620	620	744	400	36	200	200	475	110	200	318	24	25	19	4	4
DH200-198-24	Y180L-4	710	381	515	390	340	250	580	279	1345	240	870	-	370	370	530	370	620	510	744	400	36	200	200	430	110	180	279	24	25	15	4	4
DH200-328-76-O	Y315S-4	1185	381	515	390	340	250	735	406	1740	240	1100	-	450	450	630	480	720	720	789	400	40	200	200	770	130	315	508	24	30	28	4	4
DH200-292-66	Y280M-4	1050	381	515	390	340	250	679	419	1640	240	1040	-	450	450	630	480	720	720	789	400	40	200	200	640	130	280	457	24	25	24	4	4
DH200-256-56	Y280S-4	1000	381	515	390	340	250	679	368	1640	240	1040	-	450	450	630	480	720	720	789	400	40	200	200	640	130	280	457	24	25	24	4	4
DH200-230-47	Y250M-4	925	381	515	390	340	250	657	349	1520	240	1000	-	450	450	630	480	720	720	789	400	40	200	200	575	130	250	406	24	25	24	4	4
DH200-293-69-O	Y315S-4	1185	381	515	390	340	250	735	406	1740	240	1100	-	450	450	630	480	720	720	789	400	40	200	200	770	130	315	508	24	25	28	4	4
DH200-272-60	Y280S-4	1000	381	515	390	340	250	679	368	1640	240	1040	-	450	450	630	480	720	720	789	400	40	200	200	640	130	280	457	24	25	24	4	4
DH200-227-53	Y250M-4	925	381	515	390	340	250	657	349	1520	240	1000	-	450	450	630	480	720	720	789	400	40	200	200	575	130	250	406	24	25	24	4	4
DH200-202-45	Y225M-4	840	381	515	390	340	250	638	311	1440	240	965	-	450	450	630	480	720	570	789	400	40	200	200	530	110	225	356	24	25	19	4	4
DH200-443-21-O	Y225S-4	815	381	515	390	340	250	638	286	1440	240	965	-	400	400	530	370	720	570	729	400	36	200	200	530	110	225	356	24	25	19	4	4
DH200-403-18	Y200L-4	710	381	515	390	340	250	592	305	1385	240	915	-	400	400	530	370	620	620	729	400	36	200	200	475	110	200	318	24	25	19	4	4
DH200-378-15	Y180L-4	710	381	515	390	340	250	580	279	1345	240	870	-	400	400	530	370	620	510	729	400	36	200	200	430	110	180	279	24	25	15	4	4
DH200-349-11	Y180M-4	670	381	515	390	340	250	580	241	1345	240	870	-	400	400	530	370	620	510	729	400	36	200	200	430	110	180	279	24	25	15	4	4
DH200-396-20-O	Y200L-4	710	381	515	390	340	250	592	305	1385	240	915	-	400	400	530	370	620	620	729	400	36	200	200	475	110	200	318	24	25	19	4	4
DH200-378-17	Y200L-4	710	381	515	390	340	250	592	305	1385	240	915	-	400	400	530	370	620	620	729	400	36	200	200	475	110	200	318	24	25	19	4	4
DH200-353-14	Y180L-4	710	381	515	390	340	250	580	279	1345	240	870	-	400	400	530	370	620	510	729	400	36	200	200	430	110	180	279	24	25	15	4	4
DH200-331-11	Y180M-4	670	381	515	390	340	250	580	241	1345	240	870	-	400	400	530	370	620	510	729	400	36	200	200	430	110	180	279	24	25	15	4	4
DH200-446-38-O	Y280S-4	1000	381	515	390	340	250	679	368	1640	240	1040	-	400	400	530	370	720	720	759	400	36	200	200	640	130	280	457	24	25	24	4	4
DH200-403-31	Y250M-4	925	381	515	390	340	250	657	349	1520	240	1000	-	400	400	530	370	720	720	759	400	36	200	200	575	130	250	406	24	25	24	4	4
DH200-371-25	Y225S-4	815	381	515	390	340	250	638	286	1440	240	965	-	400	400	530	370	720	570	759	400	36	200	200	530	110	225	356	24	25	19	4	4
DH200-331-20	Y200L-4	710	381	515	390	340	250	592	305	1385	240	915	-	400	400	530	370	620	620	759	400	36	200	200	475	110	200	318	24	25	19	4	4



## 外形及安装尺寸 INSTALLATION DIMENSIONS

(毫米: mm)

泵型号 PUMP TYPE	电机型号 MOTOR TYPE	L	L1	L2	L3	L4	L5	L6	L7	L8	L9	L10	L11	B	B1	B2	B4	B5	B6	H	H1	H2	H3	H4	H5	H6	H7	A	d	d4	d5	n4	C	
DH200-407-35-O	Y250M-4	925	381	515	390	340	250	657	349	1520	240	1000	-	400	400	530	370	720	720	759	400	36	200	200	200	575	130	250	406	24	25	24	4	4
DH200-367-29	Y225M-4	840	381	515	390	340	250	638	311	1440	240	965	-	400	400	530	370	720	570	759	400	36	200	200	530	110	225	356	24	25	19	4	4	
DH200-335-25	Y225S-4	815	381	515	390	340	250	638	286	1440	240	965	-	400	400	530	370	720	570	759	400	36	200	200	530	110	225	356	24	25	19	4	4	
DH200-292-20	Y200L-4	710	381	515	390	340	250	592	305	1385	240	915	-	400	400	530	370	620	620	759	400	36	200	200	475	110	200	318	24	25	19	4	4	
DH200-515-66-O	Y315M-4	1240	433	590	480	430	300	766	457	1920	305	1200	-	450	450	630	490	790	790	885	500	40	200	200	770	140	315	508	24	30	28	4	5	
DH200-472-54	Y315S-4	1185	433	590	480	430	300	766	406	1920	305	1200	-	450	450	630	490	790	790	885	500	40	200	200	770	140	315	508	24	30	28	4	5	
DH200-432-43	Y280S-4	1000	433	590	480	430	300	710	368	1780	305	1170	-	450	450	630	490	790	790	885	500	40	200	200	640	130	280	457	24	30	24	4	5	
DH200-396-35	Y250M-4	925	433	590	480	430	300	688	349	1680	305	1080	-	450	450	630	490	790	690	885	500	40	200	200	575	130	250	406	24	30	24	4	5	
DH200-439-60-O	Y315S-4	1185	433	590	480	430	300	766	406	1920	305	1200	-	450	450	630	490	790	790	885	500	40	200	200	770	140	315	508	24	30	28	4	5	
DH200-403-50	Y280M-4	1050	433	590	480	430	300	710	419	1780	305	1170	-	450	450	630	490	790	790	885	500	40	200	200	640	130	280	457	24	30	24	4	5	
DH200-375-40	Y280S-4	1000	433	590	480	430	300	710	368	1780	305	1170	-	450	450	630	490	790	790	885	500	40	200	200	640	130	280	457	24	30	24	4	5	
DH200-324-33	Y225M-4	840	433	590	480	430	300	669	311	1680	305	1080	-	450	450	630	490	790	690	885	500	40	200	200	530	130	225	356	24	30	19	4	5	
DH200-515-75	Y315L2-4	1325	433	590	480	430	300	766	508	1920	305	1200	-	600	500	770	630	940	790	955	500	42	300	300	770	140	315	508	24	30	28	4	5	
DH200-472-61	Y315M-4	1240	433	590	480	430	300	766	457	1920	305	1200	-	600	500	770	630	940	790	955	500	42	300	300	770	140	315	508	24	30	28	4	5	
DH200-490-78	Y315L2-4	1325	433	590	480	430	300	766	508	1920	305	1200	-	600	500	770	630	940	790	955	500	42	300	300	770	140	315	508	24	30	28	4	5	
DH200-446-68	Y315L1-4	1240	433	590	480	430	300	766	508	1920	305	1200	-	600	500	770	630	940	790	955	500	42	300	300	770	140	315	508	24	30	28	4	5	
DH200-403-57	Y315S-4	1185	433	590	480	430	300	766	406	1920	305	1200	-	600	500	770	630	940	790	955	500	42	300	300	770	140	315	508	24	30	28	4	5	
DH250-695-30-O	Y280S-4	1000	433	590	480	430	300	710	368	1780	305	1170	-	450	450	630	490	790	790	870	500	42	240	240	640	130	280	457	24	30	24	4	5	
DH250-648-25	Y280S-4	1000	433	590	480	430	300	710	368	1780	305	1170	-	450	450	630	490	790	790	870	500	42	240	240	640	130	280	457	24	30	24	4	5	
DH250-600-22	Y250M-4	925	433	590	480	430	300	688	349	1680	305	1080	-	450	450	630	490	790	690	870	500	42	240	240	575	130	250	406	24	30	24	4	5	
DH250-550-17	Y225S-4	815	433	590	480	430	300	669	286	1680	305	1080	-	450	450	630	490	790	690	870	500	42	240	240	530	130	225	356	24	30	19	4	5	
DH250-640-28-O	Y280S-4	1000	433	590	480	430	300	710	368	1780	305	1170	-	450	450	630	490	790	790	870	500	42	240	240	640	130	280	457	24	30	24	4	5	
DH250-595-24	Y250M-4	925	433	590	480	430	300	688	349	1680	305	1080	-	450	450	630	490	790	690	870	500	42	240	240	575	130	250	406	24	30	24	4	5	
DH250-560-21	Y225M-4	840	433	590	480	430	300	669	311	1680	305	1080	-	450	450	630	490	790	690	870	500	42	240	240	530	130	225	356	24	30	19	4	5	
DH250-515-17	Y225S-4	815	433	590	480	430	300	669	286	1680	305	1080	-	450	450	630	490	790	690	870	500	42	240	240	530	130	225	356	24	30	19	4	5	
DH250-710-52-O	Y315L1-4	1240	433	590	480	430	300	766	508	1920	305	1200	-	500	500	630	490	790	790	895	500	42	240	240	770	140	315	508	24	30	28	4	5	
DH250-630-42	Y315S-4	1185	433	590	480	430	300	766	406	1920	305	1200	-	500	500	630	490	790	790	895	500	42	240	240	770	140	315	508	24	30	28	4	5	
DH250-570-35	Y280M-4	1050	433	590	480	430	300	710	419	1780	305	1170	-	500	500	630	490	790	790	895	500	42	240	240	640	130	280	457	24	30	24	4	5	
DH250-510-28	Y280S-4	1000	433	590	480	430	300	710	368	1780	305	1170	-	500	500	630	490	790	790	895	500	42	240	240	640	130	280	457	24	30	24	4	5	



## 外形及安装尺寸 INSTALLATION DIMENSIONS

(毫米: mm)

泵型号 PUMP TYPE	电机型号 MOTOR TYPE	L	L1	L2	L3	L4	L5	L6	L7	L8	L9	L10	L11	B	B1	B2	B4	B5	B6	H	H1	H2	H3	H4	H5	H6	H7	A	d	d4	d5	n4	C		
DH250-650-48-O	Y315M-4	1240	433	590	480	430	300	766	457	1920	305	1200	-	500	500	630	490	790	790	895	500	42	240	240	240	770	140	315	508	24	30	28	4	5	
DH250-585-40	Y280M-4	1050	433	590	480	430	300	710	419	1780	305	1170	-	500	500	630	490	790	790	895	500	42	240	240	240	640	130	280	457	24	30	24	4	5	
DH250-530-34	Y280S-4	1000	433	590	480	430	300	710	368	1780	305	1170	-	500	500	630	490	790	790	895	500	42	240	240	240	640	130	280	457	24	30	24	4	5	
DH250-470-28	Y250M-4	925	433	590	480	430	300	688	349	1680	305	1080	-	500	500	630	490	790	690	895	500	42	240	240	240	575	130	250	406	24	30	24	4	5	
DH250-706-62	Y315L2-4	1325	511	695	480	400	320	887	508	2060	295	670	670	600	500	800	600	600	980	850	1048	600	45	300	300	300	770	140	315	508	24	30	28	6	6
DH250-648-47	Y315M-4	1240	511	695	480	400	320	887	457	2060	295	670	670	600	500	800	600	600	980	850	1048	600	45	300	300	300	770	140	315	508	24	30	28	6	6
DH250-695-68	Y315L2-4	1325	511	695	480	400	320	887	508	2060	295	670	670	600	500	800	600	600	980	850	1048	600	45	300	300	300	770	140	315	508	24	30	28	6	6
DH250-655-55	Y315L1-4	1240	511	695	480	400	320	887	508	2060	295	670	670	600	500	800	600	600	980	850	1048	600	45	300	300	300	770	140	315	508	24	30	28	6	6
DH250-598-43	Y315S-4	1185	511	695	480	400	320	887	406	2060	295	670	670	600	600	800	600	600	980	850	1048	600	45	300	300	300	770	140	315	508	24	30	28	6	6
DH300-1051-39-O	Y315L1-4	1240	511	695	480	400	320	887	508	2060	295	670	670	500	500	800	600	600	980	850	1020	600	45	300	300	300	770	140	315	508	24	30	28	6	6
DH300-994-33	Y315M-4	1240	511	695	480	400	320	887	457	2060	295	670	670	500	500	800	600	600	980	850	1020	600	45	300	300	300	770	140	315	508	24	30	28	6	6
DH300-943-27	Y280M-4	1050	511	695	480	400	320	831	419	1900	295	620	620	500	500	800	600	600	980	770	1020	600	45	300	300	300	640	140	280	457	24	30	24	6	6
DH300-871-20	Y280S-4	1000	511	695	480	400	320	831	368	1900	295	620	620	500	500	800	600	600	980	770	1020	600	45	300	300	300	640	140	280	457	24	30	24	6	6
DH300-1030-37-O	Y315M-4	1240	511	695	480	400	320	887	457	2060	295	670	670	500	500	800	600	600	980	850	1020	600	45	300	300	300	770	140	315	508	24	30	28	6	6
DH300-968-32	Y315S-4	1185	511	695	480	400	320	887	406	2060	295	670	670	500	500	800	600	600	980	850	1020	600	45	300	300	300	770	140	315	508	24	30	28	6	6
DH300-914-27	Y280M-4	1050	511	695	480	400	320	831	419	1900	295	620	620	500	500	800	600	600	980	770	1020	600	45	300	300	300	640	140	280	457	24	30	24	6	6
DH300-850-22	Y280S-4	1000	511	695	480	400	320	831	368	1900	295	620	620	500	500	800	600	600	980	770	1020	600	45	300	300	300	640	140	280	457	24	30	24	6	6
DH300-1001-45	Y315L2-4	1325	556	754	612	520	440	885	508	2180	355	700	700	550	550	800	600	600	980	850	1152	670	45	300	300	300	770	140	315	508	24	30	28	6	6
DH300-929-37	Y315M-4	1240	556	754	612	520	440	885	457	2180	355	700	700	550	550	800	600	600	980	850	1152	670	45	300	300	300	770	140	315	508	24	30	28	6	5
DH300-976-47	Y315L2-4	1325	556	754	612	520	440	885	508	2180	355	700	700	550	550	800	600	600	980	850	1152	670	45	300	300	300	770	140	315	508	24	30	28	6	5
DH300-886-40	Y315M-4	1240	556	754	612	520	440	885	457	2180	355	700	700	550	550	800	600	600	980	850	1152	670	45	300	300	300	770	140	315	508	24	30	28	6	5
DH300-803-34	Y315S-4	1185	556	754	612	520	440	885	406	2180	355	700	700	550	550	800	600	600	980	850	1152	670	45	300	300	300	770	140	315	508	24	30	28	6	5
DH350-1098-24-O	Y315S-4	1185	511	695	520	400	320	887	406	2060	295	670	670	550	500	800	600	600	980	850	1050	600	45	300	300	300	770	140	315	508	24	30	28	6	5
DH350-1044-20	Y280S-4	1000	511	695	520	400	320	831	368	1900	295	620	620	550	500	800	600	600	980	770	1050	600	45	300	300	300	640	140	280	457	24	30	24	6	6
DH350-1008-15	Y280S-4	1000	511	695	520	400	320	831	368	1900	295	620	620	550	500	800	600	600	980	770	1050	600	45	300	300	300	640	140	280	457	24	30	24	6	6
DH350-965-11	Y250M-4	925	511	695	520	400	320	809	349	1790	295	1184	-	550	500	800	600	600	980	720	1050	600	45	300	300	300	575	140	280	406	24	30	24	4	6



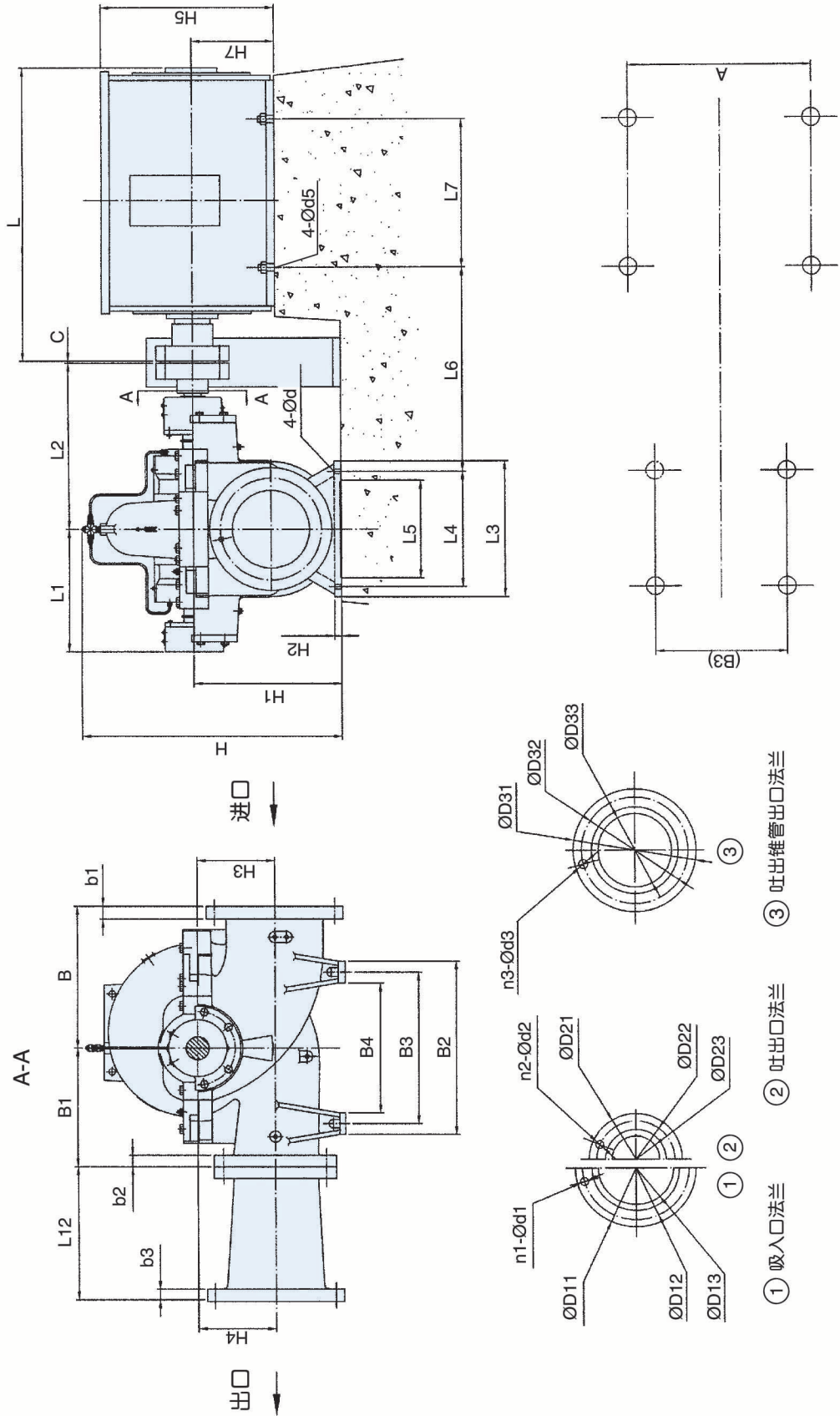
## 外形及安装尺寸 INSTALLATION DIMENSIONS

(毫米: mm)

泵型号 PUMP TYPE	电机型号 MOTOR TYPE	L	L1	L2	L3	L4	L5	L6	L7	L8	L9	L10	L11	B	B1	B2	B4	B5	B6	H	H1	H2	H3	H4	H5	H6	H7	A	d	d4	d5	n4	C	
DH350-936-23-O	Y280M-4	1050	511	695	520	400	320	831	419	1900	295	620	620	550	500	800	600	980	770	1050	600	45	300	300	300	640	140	280	457	24	30	24	6	6
DH350-864-20	Y280S-4	1000	511	695	520	400	320	831	368	1900	295	620	620	550	500	800	600	980	770	1050	600	45	300	300	300	640	140	280	457	24	30	24	6	6
DH350-799-17	Y250M-4	925	511	695	520	400	320	809	349	1790	295	1184	-	550	500	800	600	980	720	1050	600	45	300	300	300	575	140	250	406	24	25	24	4	6
DH350-700-14	Y225M-4	840	511	695	520	400	320	790	311	1720	295	1145	-	550	500	800	600	980	670	1050	600	45	300	300	300	530	130	225	356	24	25	19	4	6
DH400-1476-36	Y315L2-4	1325	556	754	612	520	440	886	508	2180	355	700	700	650	500	800	600	980	850	1120	670	48	350	350	350	770	140	315	508	24	30	28	6	6
DH400-1361-27	Y315L1-4	1240	556	754	612	520	440	886	508	2180	355	700	700	650	500	800	600	980	850	1120	670	48	350	350	350	770	140	315	508	24	30	28	6	6
DH400-1442-37	Y315L2-4	1325	556	754	612	520	440	886	508	2180	355	700	700	650	500	800	600	980	850	1120	670	48	350	350	350	770	140	315	508	24	30	28	6	6
DH400-1332-30	Y315L1-4	1240	556	754	612	520	440	886	508	2180	355	700	700	650	500	800	600	980	850	1120	670	48	350	350	350	770	140	315	508	24	30	28	6	5
DH400-1732-32-O	Y315L2-4	1325	556	754	612	520	440	886	508	2180	355	700	700	650	500	800	600	980	850	1175	670	48	350	350	350	770	140	315	508	24	30	28	6	5
DH400-1692-26	Y315L1-4	1240	556	754	612	520	440	886	508	2180	355	700	700	650	550	800	600	980	850	1175	670	48	350	350	350	770	140	315	508	24	30	28	6	5
DH400-1642-21	Y315M-4	1240	556	754	612	520	440	886	457	2180	355	700	700	650	550	800	600	980	850	1175	670	48	350	350	350	770	140	315	508	24	30	28	6	5
DH400-1420-19	Y315S-4	1185	556	754	612	520	440	886	406	2180	355	700	700	650	550	800	600	980	850	1175	670	48	350	350	350	770	140	315	508	24	30	28	6	5
DH400-1422-31-O	Y315L1-4	1240	556	754	612	520	440	886	508	2180	355	700	700	650	500	800	600	980	850	1175	670	48	350	350	350	770	140	315	508	24	30	28	6	6
DH400-1336-26	Y315M-4	1240	556	754	612	520	440	886	457	2180	355	700	700	650	500	800	600	980	850	1175	670	48	350	350	350	770	140	315	508	24	30	28	6	6
DH400-1271-22	Y315S-4	1185	556	754	612	520	440	886	406	2180	355	700	700	650	500	800	600	980	850	1175	670	48	350	350	350	770	140	315	508	24	30	28	6	6
DH400-1188-18	Y280M-4	1050	556	754	612	520	440	830	419	2020	355	650	650	500	800	600	980	770	1175	670	48	350	350	350	640	140	280	457	24	30	24	6	6	

### DH型泵外形及安装尺寸图 (不带底座)

Outline & installing Dimensions of Type DH Pumps(Without Base Plate)



注：如需要DV立式单级双吸泵外形安装尺寸，请来电洽询。



## 外形及安装尺寸 INSTALLATION DIMENSIONS

(毫米: mm)

泵型号 PUMP TYPE	电机型号 MOTOR TYPE	L	L1	L2	L3	L4	L5	L6	L7	B	B1	B2	B3	B4	H	H1	H2	H3	H4	H5	H7	A	d	d5	C
DH200-540-108-O	Y355M1-2	1540	381	515	390	340	250	743	560	370	370	530	450	370	714	400	36	200	200	848	355	610	24	28	4
DH200-583-105-O	Y355L2-4	1570	433	590	480	430	300	804	630	600	500	770	700	630	955	500	42	300	300	848	355	610	24	28	5
DH200-550-88	Y355M1-4	1570	433	590	480	430	300	804	560	600	500	770	700	630	955	500	42	300	300	848	355	610	24	28	5
DH200-536-90-O	Y355M1-4	1570	433	590	480	430	300	804	560	600	500	770	700	630	955	500	42	300	300	848	355	610	24	28	5
DH250-817-91-O	Y355L3-4	1570	511	695	480	400	320	925	630	600	500	800	700	600	1048	600	45	300	300	848	355	610	24	28	6
DH250-756-76	Y355M3-4	1570	511	695	480	400	320	925	560	600	500	800	700	600	1048	600	45	300	300	848	355	610	24	28	6
DH250-734-82-O	Y355M3-4	1570	511	695	480	400	320	925	560	600	500	800	700	600	1048	600	45	300	300	848	355	610	24	28	6
DH250-792-150-O	Y4006-4	1980	511	695	480	400	320	1045	1000	650	550	800	700	600	1155	600	32	350	350	1330	400	710	24	35	5
DH250-800-125	Y4003-4	1980	511	695	480	400	320	1045	1000	650	550	800	700	600	1155	600	32	350	350	1330	400	710	24	35	5
DH250-731-104	Y355L3-4	1570	511	695	480	400	320	924	630	650	550	800	700	600	1155	600	32	350	350	848	355	610	24	28	5
DH250-653-88	Y355L2-4	1570	511	695	480	400	320	924	630	650	550	800	700	600	1155	600	32	350	350	848	355	610	24	28	5
DH250-731-132-O	Y4003-4	1980	511	695	480	400	320	1045	1000	650	550	800	700	600	1155	600	32	350	350	1330	400	710	24	35	5
DH250-718-112	Y4001-4	1980	511	695	480	400	320	1045	1000	650	550	800	700	600	1155	600	32	350	350	1330	400	710	24	35	5
DH250-591-99	Y355L3-4	1570	511	695	480	400	320	924	630	650	550	800	700	600	1155	600	32	350	350	848	355	610	24	28	5
DH250-569-83	Y355M3-4	1570	511	695	480	400	320	924	560	650	550	800	700	600	1155	600	32	350	350	848	355	610	24	28	5
DH300-1174-66-O	Y355L2-4	1570	556	754	612	520	440	923	630	550	550	800	700	600	1152	670	45	300	300	848	355	610	24	28	5
DH300-1080-55	Y355M3-4	1570	556	754	612	520	440	923	560	550	550	800	700	600	1152	670	45	300	300	848	355	610	24	28	5
DH300-1080-54-O	Y355M3-4	1570	556	754	612	520	440	923	560	550	550	800	700	600	1152	670	45	300	300	848	355	610	24	28	5
DH300-1242-116-O	Y4005-4	1980	556	754	612	520	440	1045	1000	650	550	800	700	600	1145	670	32	350	350	1330	400	710	24	35	6
DH300-1166-100	Y4003-4	1980	556	754	612	520	440	1045	1000	650	550	800	700	600	1145	670	32	350	350	1330	400	710	24	35	6
DH300-1084-83	Y4001-4	1980	556	754	612	520	440	1045	1000	650	550	800	700	600	1145	670	32	350	350	1330	400	710	24	35	6
DH300-1001-66	Y355M3-4	1570	556	754	612	520	440	924	560	650	550	800	700	600	1145	670	32	350	350	848	355	610	24	28	6
DH300-1044-104-O	Y4003-4	1980	556	754	612	520	440	1045	1000	650	550	800	700	600	1145	670	32	350	350	1330	400	710	24	35	6
DH300-965-90	Y4001-4	1980	556	754	612	520	440	1045	1000	650	550	800	700	600	1145	670	32	350	350	1330	400	710	24	35	6
DH300-875-74	Y355M3-4	1570	556	754	612	520	440	924	560	650	550	800	700	600	1145	670	32	350	350	848	355	610	24	28	6
DH300-799-62	Y315L2-4	1325	556	754	612	520	440	886	508	650	550	800	700	600	1145	670	32	350	350	770	315	508	24	28	6
DH400-1678-53-O	Y355L3-4	1570	556	754	612	520	440	924	630	650	550	800	700	600	1120	670	48	350	350	848	355	610	24	28	6
DH400-1577-45	Y355M3-4	1570	556	754	612	520	440	924	560	650	550	800	700	600	1120	670	48	350	350	848	355	610	24	28	6
DH400-1620-51-O	Y355L3-4	1570	556	754	612	520	440	924	630	650	550	800	700	600	1120	670	48	350	350	848	355	610	24	28	6
DH400-1519-45	Y355M3-4	1570	556	754	612	520	440	924	560	650	550	800	700	600	1120	670	48	350	350	848	355	610	24	28	6
DH400-1750-94-O	Y4501-4	2180	622	860	610	520	450	1172	1120	700	650	1050	950	850	1285	750	50	350	350	1475	450	800	24	35	7
DH400-1650-76	Y4004-4	1980	622	860	610	520	450	1152	1000	700	650	1050	950	850	1285	750	50	350	350	1330	400	710	24	35	7





## 外形及安装尺寸 INSTALLATION DIMENSIONS

(毫米: mm)

泵型号 PUMP TYPE	电机型号 MOTOR TYPE	L	L1	L2	L3	L4	L5	L6	L7	B	B1	B2	B3	B4	H	H1	H2	H3	H4	H5	H7	A	d	d5	C
DH400-1570-62	Y4002-4	1980	622	860	610	520	450	1152	1000	700	650	1050	950	850	1285	750	50	350	350	350	400	710	24	35	7
DH400-1510-50	Y355L3-4	1570	622	860	610	520	450	1031	630	700	650	1050	950	850	1285	750	50	350	350	350	355	610	24	28	7
DH400-1550-80-O	Y4004-4	1980	622	860	610	520	450	1152	1000	700	650	1050	950	850	1285	750	50	350	350	350	400	710	24	35	7
DH400-1450-67	Y4002-4	1980	622	860	610	520	450	1152	1000	700	650	1050	950	850	1285	750	50	350	350	350	400	710	24	35	7
DH400-1360-57	Y355L3-4	1570	622	860	610	520	450	1031	630	700	650	1050	950	850	1285	750	50	350	350	350	355	610	24	28	7
DH400-1280-47	Y355M3-4	1570	622	860	610	520	450	1031	560	700	650	1050	950	850	1285	750	50	350	350	350	355	610	24	28	7
DH400-1836-160-O	Y5002-4	2550	622	860	720	520	420	1332	1250	750	650	1050	950	850	1290	750	40	400	400	400	500	900	24	42	7
DH400-1735-136	Y5001-4	2550	622	860	720	520	420	1332	1250	750	650	1050	950	850	1290	750	40	400	400	400	500	900	24	42	7
DH400-1624-112	Y4502-4	2180	622	860	720	520	420	1172	1120	750	650	1050	950	850	1290	750	40	400	400	400	450	800	24	35	7
DH400-1537-91	Y4005-4	1980	622	860	720	520	420	1152	1000	750	650	1050	950	850	1290	750	40	400	400	400	400	710	24	35	7
DH400-1668-139-O	Y5001-4	2550	622	860	720	520	420	1332	1250	750	650	1050	950	850	1290	750	40	400	400	400	500	900	24	42	7
DH400-1573-119	Y4503-4	2180	622	860	720	520	420	1172	1120	750	650	1050	950	850	1290	750	40	400	400	400	450	800	24	35	7
DH400-1451-89	Y4501-4	2180	622	860	720	520	420	1172	1120	750	650	1050	950	850	1290	750	40	400	400	400	450	800	24	35	7
DH400-1343-81	Y4003-4	1980	622	860	720	520	420	1152	1000	750	650	1050	950	850	1290	750	40	400	400	400	400	710	24	35	7
DH450-2743-43-O	Y4003-4	1980	622	860	612	520	450	1152	1000	750	650	1050	950	850	1295	750	55	400	400	400	400	710	24	35	7
DH450-2635-35	Y4001-4	1980	622	860	612	520	450	1152	1000	750	650	1050	950	850	1295	750	55	400	400	400	400	710	24	35	7
DH450-2563-27	Y355L2-4	1570	622	860	612	520	450	1031	630	750	650	1050	950	850	1295	750	55	400	400	400	355	610	24	28	7
DH450-2484-21	Y355M1-4	1570	622	860	612	520	450	1031	560	750	650	1050	950	850	1295	750	55	400	400	400	355	610	24	28	7
DH450-2232-42-O	Y4002-4	1980	622	860	612	520	450	1152	1000	750	650	1050	950	850	1295	750	55	400	400	400	400	710	24	35	7
DH450-2088-36	Y355L3-4	1570	622	860	612	520	450	1031	630	750	650	1050	950	850	1295	750	55	400	400	400	400	710	24	28	7
DH450-1987-30	Y355M3-4	1570	622	860	612	520	450	1031	560	750	650	1050	950	850	1295	750	55	400	400	400	355	610	24	28	7
DH450-1858-25	Y315L2-4	1325	622	860	612	520	450	993	508	750	650	1050	950	850	1295	750	55	400	400	400	315	508	24	28	7
DH400-2610-70-O	Y4501-4	2180	622	860	720	520	420	1172	1120	700	650	1050	950	850	1290	750	50	400	400	400	450	800	24	35	7
DH400-2430-60	Y4005-4	1980	622	860	720	520	420	1152	1000	700	650	1050	950	850	1290	750	50	400	400	400	400	710	24	35	7
DH400-2232-50	Y4002-4	1980	622	860	720	520	420	1152	1000	700	650	1050	950	850	1290	750	50	400	400	400	400	710	24	35	7
DH400-2072-39	Y355L3-4	1570	622	860	720	520	420	1031	630	700	650	1050	950	850	1290	750	50	400	400	400	355	610	24	28	7
DH400-2448-67-O	Y4005-4	1980	622	860	720	520	420	1152	1000	700	650	1050	950	850	1290	750	50	400	400	400	400	710	24	35	7
DH400-2268-59	Y4004-4	1980	622	860	720	520	420	1152	1000	700	650	1050	950	850	1290	750	50	400	400	400	400	710	24	35	7
DH400-2088-50	Y4002-4	1980	622	860	720	520	420	1152	1000	700	650	1050	950	850	1290	750	50	400	400	400	400	710	24	35	7
DH400-1944-41	Y355L3-4	1570	622	860	720	520	420	1031	630	700	650	1050	950	850	1290	750	50	400	400	400	355	610	24	28	7
DH500-3080-75-O	Y4507-4	2180	622	860	720	580	420	1172	1120	720	630	1020	800	580	1300	800	55	415	415	415	450	800	41	35	7
DH500-2850-72	Y4506-4	2180	622	860	720	580	420	1172	1120	720	630	1020	800	580	1300	800	55	415	415	415	450	800	41	35	7
DH500-2640-67	Y4505-4	2180	622	860	720	580	420	1172	1120	720	630	1020	800	580	1300	800	55	415	415	415	450	800	41	35	7
DH500-2450-63	Y4007-4	1980	622	860	720	580	420	1152	1000	720	630	1020	800	580	1300	800	55	415	415	415	450	800	41	35	7



## 吸入吐出口法兰及吐出锥管尺寸表

### SUCTION AND DISCHARGE NOZZLE FLANGE DISCHARGE CONIC PIPE DIMENSIONS

(毫米: mm)

泵型号 PUMP TYPE	b1	D11	D12	D13	n1	d1	b2	D21	D22	D23	n2	d2	b3	D31	D32	D33	n3	d3	L12
DH125-164-55-O	26	270	210	125	8	17.5	22	195	160	80	8	17.5	26	270	210	125	8	17.5	300
DH125-134-51-O	26	270	210	125	8	17.5	22	195	160	80	8	17.5	26	270	210	125	8	17.5	300
DH125-207-90-O	26	270	210	125	8	17.5	22	195	160	80	8	17.5	26	270	210	125	8	17.5	300
DH125-171-82-O	26	270	210	125	8	17.5	22	195	160	80	8	17.5	26	270	210	125	8	17.5	300
DH150-290-75-O	26	300	240	150	8	22	24	230	180	100	8	17.5	26	300	240	150	8	22	300
DH150-248-68-O	26	300	240	150	8	22	24	230	180	100	8	17.5	26	300	240	150	8	22	300
DH150-360-123-O	26	300	240	150	8	22	24	230	180	100	8	17.5	26	300	240	150	8	22	300
DH150-283-119-O	26	300	240	150	8	22	24	230	180	100	8	17.5	26	300	240	150	8	22	300
DH200-533-59-O	30	365	295	200	12	22	26	270	210	125	8	17.5	30	360	295	200	12	22	350
DH200-472-61-O	30	365	295	200	12	22	26	270	210	125	8	17.5	30	360	295	200	12	22	350
DH200-540-108-O	30	365	295	200	12	22	26	270	210	125	8	17.5	30	360	295	200	12	22	350
DH200-480-100-O	30	365	295	200	12	22	26	270	210	125	8	17.5	30	360	295	200	12	22	350
DH125-83-14-O	26	270	210	125	8	17.5	22	195	160	80	8	17.5	26	270	210	125	8	17.5	300
DH125-65-13-O	26	270	210	125	8	17.5	22	195	160	80	8	17.5	26	270	210	125	8	17.5	300
DH125-104-22-O	26	270	210	125	8	17.5	22	195	160	80	8	17.5	26	270	210	125	8	17.5	300
DH125-85-21-O	26	270	210	125	8	17.5	22	195	160	80	8	17.5	26	270	210	125	8	17.5	300
DH125-116-39-O	26	270	210	125	8	17.5	22	195	160	80	8	17.5	26	270	210	125	8	17.5	300
DH125-99-35-O	26	270	210	125	8	17.5	22	195	160	80	8	17.5	26	270	210	125	8	17.5	300
DH150-145-19-O	26	300	240	150	8	22	24	230	180	100	8	17.5	26	300	240	150	8	22	300
DH150-124-17-O	26	300	240	150	8	22	24	230	180	100	8	17.5	26	300	240	150	8	22	300
DH150-185-31-O	26	300	240	150	8	22	24	230	180	100	8	17.5	26	300	240	150	8	22	300
DH150-141-29-O	26	300	240	150	8	22	24	230	180	100	8	17.5	26	300	240	150	8	22	300
DH150-185-52-O	26	300	240	150	8	22	24	230	180	100	8	17.5	26	300	240	150	8	22	300

注：叶轮经过切割后的机型尺寸同原型。



## 吸入吐出口法兰及吐出锥管尺寸表

### SUCTION AND DISCHARGE NOZZLE FLANGE DISCHARGE CONIC PIPE DIMENSIONS

泵型号 PUMP TYPE	b1	D11	D12	D13	n1	d1	b2	D21	D22	D23	n2	d2	b3	D31	D32	D33	n3	d3	L12
DH150-162-51-O	26	300	240	150	8	22	24	230	180	100	8	17.5	26	300	240	150	8	22	300
DH200-274-14-O	30	365	295	200	12	22	26	270	210	125	8	17.5	30	360	295	200	12	22	350
DH200-238-15-O	30	365	295	200	12	22	26	270	210	125	8	17.5	30	360	295	200	12	22	350
DH200-269-27-O	30	365	295	200	12	22	26	270	210	125	8	17.5	30	360	295	200	12	22	350
DH200-241-25-O	30	365	295	200	12	22	26	270	210	125	8	17.5	30	360	295	200	12	22	350
DH200-310-47-O	30	365	295	200	12	22	26	270	210	125	8	17.5	30	360	295	200	12	22	350
DH200-277-43-O	30	365	295	200	12	22	26	270	210	125	8	17.5	30	360	295	200	12	22	350
DH200-328-76-O	30	365	295	200	12	22	26	270	210	125	8	17.5	30	360	295	200	12	22	350
DH200-293-69-O	30	365	295	200	12	22	26	270	210	125	8	17.5	30	360	295	200	12	22	350
DH200-443-21-O	30	365	295	200	12	22	26	300	240	150	8	22	34	360	295	200	12	22	300
DH200-396-20-O	30	365	295	200	12	22	26	300	240	150	8	22	34	360	295	200	12	22	300
DH200-446-38-O	30	365	295	200	12	22	26	300	240	150	8	22	34	360	295	200	12	22	300
DH200-447-35-O	30	365	295	200	12	22	26	300	240	150	8	22	34	360	295	200	12	22	300
DH200-515-66-O	30	365	295	200	12	22	26	300	240	150	8	22	34	360	295	200	12	22	300
DH200-439-60-O	30	365	295	200	12	22	26	300	240	150	8	22	34	360	295	200	12	22	300
DH200-583-105-O	30	365	310	200	12	26	26	300	250	150	8	26	34	360	295	200	12	22	300
DH200-536-90-O	30	365	310	200	12	26	26	300	250	150	8	26	34	360	295	200	12	22	300
DH250-695-30-O	32	425	355	250	12	26	30	365	295	200	12	22	36	425	355	250	12	26	300
DH250-640-28-O	32	425	355	250	12	26	30	365	295	200	12	22	36	425	355	250	12	26	300
DH250-710-52-O	32	425	355	250	12	26	30	365	295	200	12	22	36	425	355	250	12	26	300
DH250-650-48-O	32	425	355	250	12	26	30	365	295	200	12	22	36	425	355	250	12	26	300
DH250-817-91-O	32	425	355	250	12	26	30	360	295	200	12	22	36	425	355	250	12	26	300
DH250-734-82-O	32	425	355	250	12	26	30	360	295	200	12	22	36	425	355	250	12	26	300

注：叶轮经过切割后的机座尺寸同原型。



## 吸入吐出口法兰及吐出锥管尺寸表

### SUCTION AND DISCHARGE NOZZLE FLANGE DISCHARGE CONIC PIPE DIMENSIONS

泵型号 PUMP TYPE	b1	D11	D12	D13	n1	d1	b2	D21	D22	D23	n2	d2	b3	D31	D32	D33	n3	d3	L12
DH250-792-150-O	47	425	370	250	12	30	41	360	310	200	12	26	36	425	355	250	12	26	300
DH250-731-132-O	47	425	370	250	12	30	41	360	310	200	12	26	36	425	355	250	12	26	300
DH300-1051-39-O	32	485	410	300	12	26	32	425	355	250	12	26	34	485	410	300	12	26	300
DH300-1030-37-O	32	485	410	300	12	26	32	425	355	250	12	26	34	485	410	300	12	26	300
DH300-1174-66-O	32	485	410	300	12	26	32	425	355	250	12	26	34	485	410	300	12	26	300
DH300-1080-54-O	32	485	410	300	12	26	32	425	355	250	12	26	34	485	410	300	12	26	300
DH300-1242-116-O	51	485	430	300	16	30	48	425	370	250	12	30	34	485	410	300	12	26	300
DH300-1044-104-O	51	485	430	300	16	30	48	425	370	250	12	30	34	485	410	300	12	26	300
DH350-1098-24-O	36	555	470	350	16	26	32	485	410	300	12	26	38	555	470	350	16	26	300
DH350-936-23-O	36	555	470	350	16	26	32	485	410	300	12	26	38	555	470	350	16	26	300
DH400-1678-53-O	38	620	525	400	16	30	32	485	410	300	12	26	48	620	525	400	16	30	450
DH400-1620-51-O	38	620	525	400	16	30	32	485	410	300	12	26	48	620	525	400	16	30	450
DH400-1750-94-O	38	620	525	400	16	30	32	485	410	300	12	26	48	620	525	400	16	30	450
DH400-1550-80-O	38	620	525	400	16	30	32	485	410	300	12	26	48	620	525	400	16	30	450
DH400-1836-160-O	58	620	550	400	16	36	50	485	430	300	16	30	48	620	525	400	16	30	450
DH400-1688-139-O	58	620	550	400	16	36	50	485	430	300	16	30	48	620	525	400	16	30	450
DH400-1732-32-O	38	620	525	400	16	30	36	555	470	350	16	26	40	620	525	400	16	30	300
DH400-1422-31-O	38	620	525	400	16	30	36	555	470	350	16	26	40	620	525	400	16	30	300
DH400-2743-43-O	38	640	585	450	20	31	38	580	525	400	16	31	42	670	585	450	20	30	450
DH400-2232-42-O	38	640	585	450	20	31	38	580	525	400	16	31	42	670	585	450	20	30	450
DH400-2610-70-O	38	620	525	400	16	30	36	555	470	350	16	26	40	620	525	400	16	30	300
DH400-2448-67-O	38	620	525	400	16	30	36	555	470	350	16	26	40	620	525	400	16	30	300
DH500-3080-75-O	42	715	650	500	20	34	36	520	470	350	16	28	40	620	525	400	16	30	300

注：叶轮经过切割后的机型尺寸同原型。